



Clarion Clarion Clarion

3600 N. Garfield

Midland, Texas 79705

(432) 685-4526 www.midlandcollegefoundation.org

MIDLAND COLLEGE
FOUNDATION

In This Issue

Foundation grants continue to provide resources for quality instruction and support services - page 3

A fabulous fall season at Midland College - page 4

Abell-Hangar Foundation establishes Laura McCabe Students in Philanthropy Scholarship - page 9

Hanley gift will provide state-of-the-art printmaking studio - page 12

F. Marie Hall SimLife Center will bring learning to life

Thanks to the generosity of Midland philanthropist, F. Marie Hall, Midland College has announced plans for the F. Marie Hall SimLife Center at Midland College. The state-of-the-art facility will be housed in the Davidson Family Health Sciences Building and is planned for completion in spring 2012. The Center will simulate a real hospital environment and will include six exam rooms



F. Marie Hall

adjoining two debriefing conference rooms; two simulation training centers, each equipped with six labs; a simulated birthing room—where a manikin named Noelle will deliver approximately 24 babies every week!—a neonatal unit; two

emergency room training labs located near an ambulance bay; and two medical/surgical rooms containing wireless manikins that breathe, blink, speak, bleed, and even sweat.

The Center not only will support interdisciplinary teaching and learning for Midland College students, but also will be used for training purposes by Texas Tech University Health Sciences Center and Midland Memorial Hospital. In addition, the Center will be available to junior high and high school students for healthcare careers exploration.

F. Marie Hall, a native of West Texas, has served on the Midland College Foundation Board since 2000, and Midland College has been touched in many ways by Miss Hall's generosity. In 2003, Hall's Way, a pedestrian bridge, was built upon Marie's vision to connect Midland Community Theatre (MCT) to Midland College, both practically

"My vision is for students and healthcare professionals to have access to a unique environment capable of enriching their knowledge and skills necessary to provide superlative healthcare."

F. Marie Hall

and symbolically. In August of 2008, Midland College dedicated the 79,072-square-foot F. Marie Hall Academic Building in honor of Marie, and in January 2010, Miss Hall's gift of a nine-foot Steinway concert grand piano marked the catalyst for Midland College to become an All-Steinway School.

The F. Marie Hall SimLife Center at Texas Tech University Health Sciences Center in Lubbock recently opened and will serve as a sister facility to the planned Center at Midland College. Marie envisions the creation of the F. Marie Hall SimLife Center at Midland College to be a "cross-pollination of best practices between the two entities in furtherance of their partnership to provide superb educational opportunities to their respective students."

Lea Keese, Midland College Simulation

Center Director, proudly states, "Ultimately the residents of West Texas will be the beneficiaries of Miss Hall's generous gift. It's highly likely that we will need medical care at some point in our lives. Many of us will require hospitalization. Some will call 911 for emergency care. Students trained in the F. Marie Hall SimLife Center at Midland College will later become those professionals who will administer healthcare to us. What makes this donation so special is the fact that we all benefit."



Dr. Lavi Oud, Chief of the Division of Pulmonary and Critical Care Medicine at Texas Tech University Health Sciences Center at the Permian Basin, and Ms. Raceli Gibson, Nurse Educator, Emergency Services/Cath-Lab at Midland Memorial Hospital, demonstrate emergency cardiac care simulation while MC nursing and paramedic students assist.

**Midland College
Foundation Board Officers**

President

Richard T. McMillan, Esq.

Vice President

Glenn Rogers, D.D.S.

Secretary

H. Joseph de Compiegne

Directors

Gregory Bartha, M.D.

Spencer Beal

Mike Black

Jack E. Brown

Arnulfo T. Carrasco, M.D.

Linda Cowden

Joann E. Foster

Marie Hall

Jim Henry

Tevis Herd, Esq.

Cadell Liedtke

Vangie Lindsey

T. B. O'Brien

Beverly Pevehouse

Clarence Scharbauer III

Steve Thomas, Ph.D.

Carole Warren

Ralph L. Way

Terry Wilkinson

Modesta Williams

Word Wilson

Staff

Executive Director

Eileen Piwetz, Ed.D.

Administrative Assistant

Cynthia Morales, C.P.S.

Secretary

Maricela Dominguez

Clarion Editor

Rebecca Bell

Design/Layout

Chris Hieb

Feature Writer

Nancy Brown

Photographers

J. Don Wallace

Katherine Inskoop

Contributor

Karen Lanier



The Midland College Foundation

may be contacted at:

(432) 685-4526

(432) 685-4714 (Fax)

epiwetz@midland.edu

www.midlandcollegefoundation.org

MC Health Sciences alumnae receive recognition in professional careers

Former MC student awarded Texas School Nurse of the Year



Juanita Valdez

It took Juanita Valdez a year and a half to complete the requirements for entrance into the MC Associate Degree Nursing (A.D.N.) program. She was a stay-at-home mom who took her classes very seriously, because she knew how difficult it was to get into the program. "It was very, very competitive. They only took 20 students each semester and you did not get into the A.D.N. program without all A's in your prerequisites," Ms. Valdez said. Juanita did make straight A's in her prerequisite courses and was accepted into the A.D.N. program, from which she graduated in 1994.

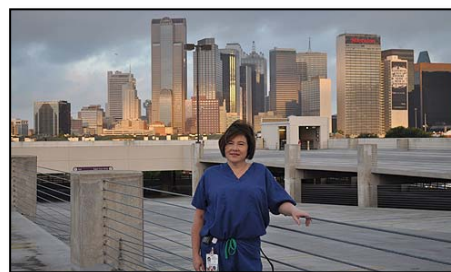
After almost two years as a nurse on the post-partum floor of the Maternal/Child Division at Midland Memorial Hospital, she landed the coveted position of school nurse with Midland Independent School District (MISD). She is the Health & Nutrition Coordinator for MISD, supervising two licensed vocational nurses at Bunche Early Childhood Center and West Early Childhood Center. "Having a nurse on each campus plays a big role in the students' academic success," Juanita said. "A healthy child is a better learner. One of our main goals is to get the parents connected with a dental and medical home so they are not using the emergency room as their primary provider."

Juanita is very fulfilled in what she refers to as a "helping profession" and her hard work has paid off with a recent recognition: School Nurse of the Year, not just in Midland, not just for the region, but she was selected among many other nominees for this award at the state level! "Never in my wildest dreams did I think I would be selected at the state level!" Juanita said. "This is such an extraordinary honor."

Former MC Radiography student enjoys career as Cardiovascular Specialist

Leigh Ann Ward graduated from the Midland College Radiography program in 1988. During her very busy clinical instruction she was in class until 4:00 p.m., and then went to work as a "student tech" at Midland Memorial Hospital (MMH) until 11:00 p.m. She did this every weekday, and she loved it. "It was fun ... the Radiography classes were awesome, and we were all like a big family!" Leigh Ann said. "The instructors were always challenging us, quizzing us, preparing us. They did not want us to fail," she added. Clinical Director Bill Heathman would stay late with Leigh Ann and her classmates to tutor them, on his own time, with their physics' assignments.

"Midland College made it possible, this career... I love my job!"



Leigh Ann loves her work and life in Dallas!

Today, Leigh Ann is working at Baylor Hamilton Heart & Vascular Hospital in Dallas, where she enjoys very specialized work as a Cardiovascular Invasive Specialist II.

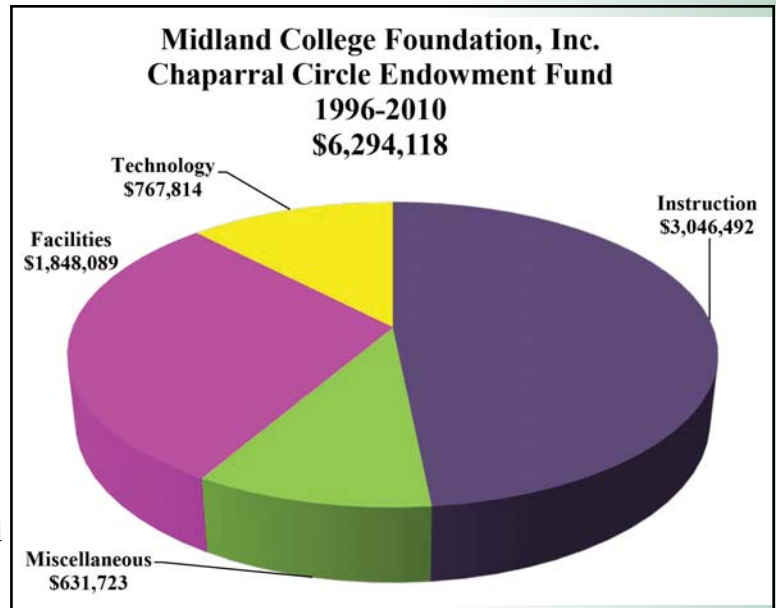
Leigh Ann's hard work has more than paid off, coming to special fruition this past April, when she received the "Employee of the Year" Award (in hospitals with 0-99 beds) from the Dallas Ft. Worth Hospital Council. She was nominated by the CEO at Baylor, Dr. Nancy Vish, and selected to receive the award from 34 other nominees.

To say Leigh Ann enjoys her job is an understatement. "MC made it possible, this career. I like getting up and going to work every day because I love my job!" she said.

Foundation grants continue to provide resources for quality instruction and support services

Congratulations to Dr. Glenda Lindsey-Hicks, Midland College English Professor, who was awarded \$5,765 through Dalious Professional Development Funds to attend the Oxford Round Table Conference in Oxford, England, in July 2011. The conference, entitled “Two Decades of Academic Discourse” will allow Dr. Hicks the opportunity to participate in a seminar-style conference with other English teachers from throughout the world. The Dalious Professional Development Fund was established from the Estate of Ella Mae Dalious for MC faculty professional development. The Midland College Foundation reviews requests and makes awards twice per year.

At its October 28 meeting, the MC Foundation also reviewed requests and granted awards from the Chaparral Circle Endowment Fund (CCEF). The Foundation approved \$425,648 to assist numerous MC programs in their worthwhile causes and plans for growth. Funds approved this fall include \$248,689 for instructional purposes, \$109,823 to upgrade MC infrastructure and \$67,136 for student services. Since it was established in 1996, the CCEF has provided over \$6 million in funding to Midland College programs (see pie chart above). The CCEF is one of the main reasons Midland College is able to provide students and the community with superb instruction, technology and support resources.



Community colleges - an American innovation

The year was 1901, and as the world was celebrating the beginning of the 20th century, two major events occurred that would shape the future of Midland: Oil was discovered at Spindletop in Beaumont, Texas, and the first community college was formed in Joliet, Illinois.

Community colleges are a true American innovation—a product of twentieth-century American higher education. In 1947, President Harry Truman called for the establishment of a network of public community colleges that would charge little or no tuition, serve as cultural centers, be comprehensive in program offerings, emphasize civic responsibility, and serve the areas in which they are located.

Sixty-two years later, as of 2009, 36 percent of Midland County high school graduates attended Midland College, and nationwide, over 40 percent of all American undergraduate students attend community and junior colleges. In today’s economy, American careers have undergone immense and dramatic changes. The U.S. Department of Labor predicts that college graduates will have 13 careers in their lifetime. Five of those careers don’t even exist yet!

In a recent *Time* magazine article, “Can Community Colleges Save the U.S. Economy?” it was stated, “The 1,200 community colleges in the U.S. are especially suited to helping students adapt to a changing labor market. While four-year universities have the financial resources to lure top professors and students, they are by nature slow-moving. Community colleges, on the other hand, are smaller and able to tack quickly in changing winds. They often partner with local businesses and can gin up continuing education courses mid-semester in response to industry needs, getting students in and out and ready to work—fast.”

Now in 2010—over 100 years after Spindletop and the founding of Joliet Junior College—the Permian Basin produces one-fifth of the nation’s total petroleum and natural gas output, and Midland College remains steadfastly committed to providing programs dedicated to the needs of Midlanders and Midland’s ever-growing economy.



A fabulous fall season at Midland College

The Midland community was able to enjoy two outstanding events with this past fall's Davidson Distinguished Lecture Series and Phyllis & Bob Cowan Performing Arts Series performances.

On September 16, Colonel Eileen Collins informed and entertained a Davidson Distinguished Lecture Series audience of about 1,200 as she told her experiences of being a NASA space shuttle commander and pilot. Then, on October 18, a crowd of approximately 2,800 filled the Al G. Langford Chaparral Center to be entertained by the low-key reflections of author, storyteller, humorist, radio personality, and master story-teller, Garrison Keillor, during the Phyllis & Bob Cowan Performing Arts Series fall presentation.

Receptions honoring the Midland College Foundation *Friends of the Series* and Distinguished Donors were held in conjunction with both events. The reception preceding Colonel Eileen Collins' September 16 lecture was hosted by Julie & Randy Stevens and Midland Sixty-Six Oil Company. The October 18 reception, held after Garrison Keillor's performance, was hosted by Cotton, Bledsoe, Tighe and Dawson, PC.



Randy and Julie Stevens with Colonel Eileen Collins (middle).



Members of Cotton, Bledsoe, Tighe and Dawson, PC with Garrison Keillor. From left to right: Drew Anderson, Darren Skiles, Bill Berry, Garrison Keillor, Susan Richardson, Charles Tighe and Mike Curry



Peggy and Bob Cowan with Garrison Keillor (middle).

A harvest of student activities

This fall found MC students "hitting the books" and enjoying the energy and excitement of a myriad of activities that MC offers its students. Sports, clubs and organizations, student government—MC offers its students all of these and more.

In support of breast cancer awareness, the Lady Chaparral volleyball team observed their fourth annual Breast Cancer Awareness Night on Wednesday, October 6. The event was held in conjunction with the team's match against the New Mexico Military Institute Broncos. (MC won the match in a three-game sweep!) The Lady Chaps autographed a pink volleyball that was used for the opening serve, and then donated it to the local chapter of the American Cancer Society. MC students and the community showed their support of breast cancer awareness by wearing pink to the event.



On October 15-16, Midland College was the proud host of the Region I Texas Junior College Student Government Association (TJCSGA) Leadership Conference. Community college students who are student government representatives from Amarillo College, El Paso Community College, Howard College, Midland College, Odessa College, South Plains College, Texas State Technical College-West Texas and Western Texas College were in attendance. Conference sessions included presentations on active leadership conducted by Vicki Jay, Executive Director of Rays of Hope, and Judge Woody Kupper, Ector County Justice of the Peace.

Other fall activities included an Open House to showcase MC's new buildings and renovations as a result of the \$41.8 million bond construction project, the semi-annual Student Club Fair, a student music recital benefitting MC music scholarships, the annual Students in Philanthropy Commissioning Ceremony, the MC Cogdell Learning Center Fall Fair, the MC and Midland Arts Association Juried Art Exhibit at MC's McCormick Gallery, and the American Diabetes Association's Step Out for Diabetes event in which MC President, Dr. Steve Thomas, was an industry leader.



MC Student Government representatives (from left to right): Aide Ponce, Amanda Mitchell, Kenny Norman, Zach Baer, LaMark Hailey, and Karla Ugalino



**Coming in
Spring 2011!**

DAVIDSON

distinguished lecture series



Celia Sandys

Sir Winston Churchill's Granddaughter
*"Memories of my Grandfather
 at Home and Abroad"*

Thursday, March 24, 2011
 7:30 p.m.

Al G. Langford Chaparral Center

Celia Sandys, daughter of Sir Winston Churchill's eldest child, Diana, and Cabinet Minister Duncan Sandys, is an internationally acclaimed author, journalist, television presenter and speaker. She is now organizing a series of exclusive tours based on her grandfather's travels around the world.

Celia has published five books on Winston Churchill, which combine intensive research with personal anecdotes from her time with him in England and abroad. Her most recent book, *We Shall Not Fail - The Inspiring Leadership of Winston Churchill*, describes his role as Britain's Prime Minister from 1940 to 1945, in which he led his country, and the rest of the free world, to victory against Nazi Germany in World War II.

Another of her books, *Chasing Churchill*, is the basis for a documentary which was first aired on PBS in the USA and on the Discovery Channel in the UK in 2008. Presented and narrated by Celia Sandys, the program describes her grandfather's extensive military, political and private

travels across the world. The program presents a riveting portrait of one of the 20th Century's iconic figures, as painted by someone who knew him as "Grandpapa."

Drawing on her intimate knowledge of Winston Churchill's personal and political life, her speeches are often accompanied by excerpts from some of her grandfather's speeches as well as photographs and other material drawn from her private collection. Her lecture at Midland College, "Memories of My Grandfather At Home and Abroad," is one of her most popular!

All events in the Lecture Series and the Performing Arts Series are FREE and open to the public. For more information, please call (432) 685-4526, or see us online at www.midlandcollegefoundation.org

PHYLLIS & BOB COWAN

performing arts series

The Russian National Ballet Theatre was founded in 1989 when legendary principal dancer of the Bolshoi Ballet, Sergei Radchenko, sought to realize his vision of bringing together the highest classical elements of the great Bolshoi and Kirov Ballet companies. This independent new company still holds within the framework of Russian classic ballet.

Leading dancers from across Russia have forged under Radchenko's direction an exciting company staging new productions of classics such as *Giselle*, *Don Quixote*, *Paquita* and *Carmen*.

Since its inception, the Russian National Ballet Theatre has completed two tours of Europe, with extraordinary receptions in Italy, France, Spain, Germany and the Netherlands. Two tours of the United Kingdom, including capacity audiences at London's famed Coliseum, have resulted in numerous re-engagements.



*A Columbia Artists Production
 Direct from Moscow, Russia*

Russian National Ballet Theatre

Company of 50
 Presents

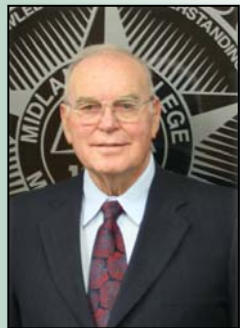
"The Sleeping Beauty"

Monday, May 2, 2011
 7:00 p.m.

Al G. Langford Chaparral Center

The company has also performed with great success in Turkey at the Istanbul Festival and in Greece at the Athens Festival, and recently completed a two-month tour of Japan, Korea, Singapore and Hong Kong. Under the direction of Sergei Radchenko, the Russian National Ballet Theatre continues to expand its repertoire. In addition to commissioning new works from within Russia and abroad, the company specializes in Twentieth Century full-length ballets such as *Cinderella*, *Romeo and Juliet*, *Legend of Love*, *Stone Flower* and *The Golden Age*.

Dr. Al G. Langford, Founding President of Midland College



In 1969, Dr. Al G. Langford received his Doctorate of Education from Texas Tech University and then came to the Permian Basin as dean of the Midland Campus of the Permian Basin Junior College District. In 1972, after the Texas House of Representatives voted approval for the establishment of an independent Midland College District, Dr. Langford was elected president.

During his career as MC President, Midland College grew from 660 students taking evening classes at Robert E. Lee High School in 1972, to almost 3,000 students taking day and evening classes at the current MC campus location in 1981. Lance Langford, Dr. Langford's son, said that Midland College was one of his father's proudest accomplishments. The Al G. Langford Chaparral Center serves as a monument to his service.

In 1973, Dr. Langford wrote, "Midland College, like all worthwhile enterprises, is the result of a dream and the product of dedicated efforts to overcome obstacles . . . Midland College is a 'community college' in the finest sense of the term. The community has given us solid support. From

the beginning, residents showed an above-normal dedication to the college, and they gave unselfishly of their time and talent to its development."

Dr. Al G. Langford's tenure as the first president of Midland College characterized the growth of the Midland community and the drive to secure educational opportunities and resources for encouraging that growth. Midland College joins with the entire Midland community in celebrating the life of the "Father of Midland College."

Memorials may be directed to the Dr. Al G. Langford Athletic Endowment Fund.



1973 Midland College groundbreaking. Dr. Al G. Langford is third from left.

Dr. Al G. Langford Athletic Endowment Fund	
Mona Ables	Emma & Percy King
Armstrong & Wurster, LLP	Mrs. William D. Kleine
Austin Christian	Machelle & Charlie Knight
Fellowship 2:42 Group	Janis & Russel Langford
Mr. & Mrs. H. G. Bedford	Mary Lopez
Nodgie & Keith Brewer	David Miller
Mr. & Mrs. Elvin Brownlee	Dorothy Nutter
Mr. & Mrs. Jack L. Byrd	Ruth Orson
Mr. & Mrs. Frank Kell Cahoon	Norma & Dr. Jess Parrish
Diane Davidson Claiborne	La Voe & Ken Peeler
Deana & Todd Crawford	Maura & Ed Penz
Mr. & Mrs. J. D. Crawford	Charles W. Perry
Jacquelyne Cromwell	Beverly Pevehouse
Roy H. Davidson	Jeanette Phariss
Steve Davidson	Wanda & Bob Phillips
Rita Nell & David Diffie	Dr. Eileen & Jim Piwetz
Mary & Larry Donham	Frank B. Powell
Laura & Bill Driscoll	Gay & George Price
L O A Class	Jill & John Randolph
Mr. & Mrs. Glen J. Ellis	Jan & Andrew Reed
Linda & Tracy Frazier	Ema Rivera
Dr. Terry & Bruce Gilmour	Yvonne Scarbrough
Brookie Green	Wendy & Richard Segina
Mary & Richard Greth	Jill & Ben Sheppard
Janel & Dr. Wayne Holcomb	Vicki & Tom Stevens
Jack Huff	Robin & Mark Thomas
Allyne Johnson	Vicki & Dr. Steve Thomas
	H. A. Tuck
	Unoco PLS
	Brandon Williams

F. Marie Hall SimLife Center	Chaparral Circle Endowment Fund
Dr. Deana Savage & Glenn Brown	Bahola & Tim Edwards Anne Mewhorter
Dr. Marshall Box Endowed Scholarship	Dara Perry Bush, R.N., B.S.N. Nursing Scholarship
Lucy Box	Jackie & Wes Perry
	Dr. Celia Harris Nursing Scholarship
	Dr. Celia Harris

In memory of...

Mary Virginia “Mariva” Bast



Mariva took great joy in living, believing that it is up to you on how you live and how happy you want to be. More importantly to her was to be active and meet people. She and her husband C. L. (Bud) Bast owned a ranch in Sweetwater.

In the 1960’s, Mrs. Bast became the first person in Sweetwater to be named a Life Master in duplicate bridge. Mariva remained a competitive duplicate bridge player throughout her life, even when she moved to Midland in 2007, due to health issues.

She is survived by her daughters—Kay Bast Bird, wife of Charles Bird of Midland, and Ann Bast Corley, wife of James Corley of Fort Worth.

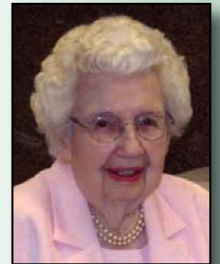
Mariva said her faith helped her level of confidence and happiness, and contributed to her optimism. Throughout her life Mariva found great joy in her grandchildren and great-grandchildren. She lived well and worked hard.

Memorials may be directed to the Dr. Gregory Bartha Health Sciences Scholarship.

Dr. Gregory Bartha Health Sciences Scholarship	
Aggie Anguish	Patti & Watson LaForce
June Cowden	Nancy Langford
Nancy Hagan	Sue & Bill Marshall
Mary Kennedy	Terry Slotsve
Dorothy Kincaid	Mary Alice Tidwell
Ann Kleine	

Dara Perry Bush, R.N., B.S.N. Nursing Scholarship
Jackie & Wes Perry

Jesse Scott Price Gilmour



Education was held in high regard by this former Midland High teacher. Her college alma maters include Paris Junior College in Paris, Texas, and Southwestern University in Georgetown, Texas. While at Southwestern University she received two Bachelor’s degrees—in music and English—and pledged Alpha Delta Pi sorority, of which she remained a lifelong member.

Jesse was active in many community activities, but she will be remembered by her devotion to her church and her family. She played the piano at First Presbyterian Church and was active throughout her life with many activities at the church. In fact, members of First Presbyterian Church, as well as other Midlanders, will always fondly remember her delicious homemade sourdough bread and cookies.

Jesse was the mother-in-law of Midland College Government professor, Dr. Terry Gilmour.

Memorials may be directed to the Dr. Gregory Bartha Health Sciences Scholarship at Midland College or the Jerry Mills Faculty Development Fund at Midland College.

Howell (Boots) Watkins

Before Howell (Boots) Watkins taught Psychology and Sociology classes at Midland College, he served in the Air Force from 1943 to 1945 during World War II.

In 1972, Howell moved to Midland, where he began teaching at Midland College and serving as a part-time Methodist minister, before retiring in 1991. He continued teaching sociology at the Big Spring prisons and to minister at small area churches. When not teaching or ministering, Howell could be found at Sanity Acres, his farm in Greenwood, where he herded his cats and sold pecans and Christmas trees.

Memorials may be directed to the Howell Watkins - Betty Gaines Behavioral Science Scholarship Fund at Midland College.



Howell Watkins & Betty Gaines Behavioral Science Scholarship	
Elizabeth & Preston Black	Vicki & Dr. Steve Thomas
Joyce Hinsley	Dr. Tyler Tindall
Dr. Pamela Howell	H. A. Tuck
Dixie C. Mims	Dr. Mary Williams
Dr. Eileen & Jim Piwetz	Dale Westfall

Jerry Mills Faculty Development Fund	Chaparral Circle Endowment Fund
Katherine Allen Rebecca Bell Mary E. Braselton Liz & Tom Corll Rita Nell & David Diffie Sonia Ford Dr. Jerry Franks Dr. Pamela Howell Carole & Dr. Stan Jacobs Mary Lopez Betty & Jerry Mills Sandra & Dr. Rex C. Peebles Dr. Eileen & Jim Piwetz Jan & Andrew Reed Ema Rivera Drs. Donna & Spencer Thompson Julia & Eric Vickery J. Don Wallace	Cynthia & Art Morales
	Dr. Gregory Bartha Health Sciences Scholarship
	Dottie & Norm Barker Rita Nell & David Diffie Karen & Lawrence Gates C. Hubbard Bob Ittner

Nobles family establishes scholarship and gives to Studio 3600 art exhibits

During his retirement years, Jack Nobles was able to pursue his love of painting at Midland College, and his dedication to his painting was evident, even through very difficult times. "Even when his health was failing, he never missed class," said MC Art Professor Warren Taylor. In honor of this commitment to MC's art program, Jack's wife, Marthann, their daughter Fredi Nobles Seeker, and their son, Philip Nobles, have established the Jack B. Nobles Endowed Scholarship Fund. The scholarship is to support Midland College students with a 3.0 GPA who are committed to continuing their education after graduating from MC.

Marthann Nobles has been a longtime supporter of Midland College. She has loyally attended the many art and music events held at the college over the past decades and has given very generously to MC during that time. In addition to this scholarship fund, she recently gave to the Grand Piano Fund which has been instrumental in growing the MC music program. "She is a true friend of the arts," said MC Foundation Executive Director and Vice President of Institutional Advancement Dr. Eileen Piwetz.

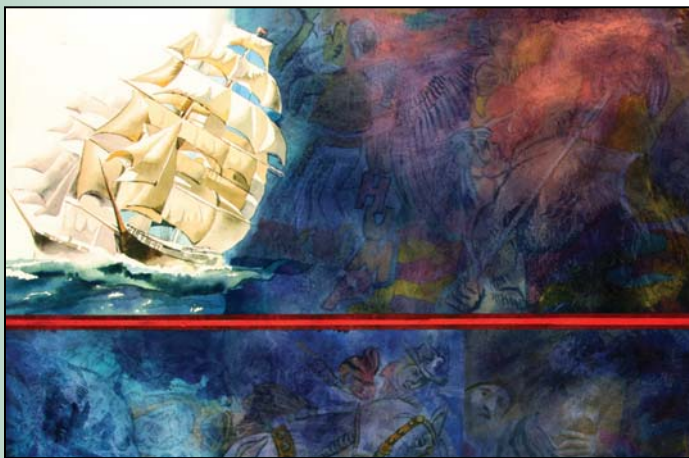
In addition to the scholarship, Fredi Nobles Seeker made another gift to Midland College in memory of her father. Ms. Seeker's gift will help sponsor the Studio 3600 art exhibit series for the next three years. "I am thrilled to have the additional funding towards the Studio 3600 Series. Since its inception, the Studio 3600 Series has become a very significant part of MC's art department, and we are so thankful that she recognizes it as such. I believe Ms. Seeker's contribution will further the series, so that our students and individuals in our community can enjoy its benefits," said McCormick Gallery Director J. Don Wallace.



Marthann and Jack Nobles. Picture in background was painted by their daughter, Fredi Nobles Seeker, while she was a student in one of MC Art Professor, Warren Taylor's, classes

*Gifts to the MC Foundation may
be made online at
www.midlandcollegefoundation.org
or mailed to the MC Foundation,
PAD 141, 3600 N. Garfield
Midland, Texas 79705
(432) 685-4526*

Midland College McCormick Gallery
Studio 3600 Series
Featuring the works of
Midland College Art Professor,
Warren Taylor



Opening Reception
Thursday, January 27, 2011
11:30 a.m. - 1:00 p.m.

Gallery Director, J. Don Wallace, invites the public to enjoy a complimentary sandwich lunch while viewing a collection of works by MC Art Professor, Warren Taylor.

Mr. Taylor's work has been seen in exhibitions across the country including Watercolor USA and The American Watercolor Society Annual Exhibition in New York City, as well as the National Watercolor Society, and more than 300 galleries, colleges, universities, and museums. In 1999, he received the Special Achievement Award from The Piper Foundation.

Taylor joined the faculty of Midland College in 1979 where he teaches classes in painting, watercolor, drawing, and art history. *Voyage* (seen here—"detail" from the larger painting) contains his signature style of images that appear to be taken out of our subconscious and overlaid with a recognizable everyday object. Taylor routinely references the history of art and uses it to create his surreal compositions.

Scholarships

Northside Lions Club members contribute to scholarship fund

Every year, since 1996, members of the Northside Lions Club provide money for scholarships for Midland College students. On September 7, four club members presented \$2,000 to MC President, Dr. Steve Thomas, for Midland College scholarships. In addition to this annual contribution, the Northside Lions Club also funds an endowed scholarship. Each year since 2005, the Club has contributed toward this endowed scholarship with the eventual goal of having \$10,000 to serve as a corpus for this endowment. Both scholarships benefit Midland College students.



Midland College President Dr. Steve Thomas (second from left) accepts scholarship checks from John M. Wojtkun, Secretary/Treasurer and Scholarship Chairman of the Northside Lions Club. Northside Lions Club members Mark Singh (left), Don Eckerty (second from right) and Richard Irvin (right) look on.

Abell-Hanger Foundation establishes Laura McCabe Students in Philanthropy Scholarship

The Students in Philanthropy Program (SIP) is the brainchild of the Abell-Hanger Foundation, and Laura McCabe was instrumental in establishing the program at Midland College 13 years ago. During that time, Laura’s mentoring and guidance have helped MC students learn about the importance of philanthropy and the role of nonprofit organizations in the community. Suzanne Thomas, Abell-Hanger Foundation Grants Officer, states, “Laura was the perfect person for the job because she represents what is so special about Midland—a love for community, a heart to serve others and an infectious ‘can-do’ attitude.” Through the fundraising and grant-making process, SIP students not only make needed contributions to nonprofit organizations, but also gain leadership and stewardship training through a structured program designed to educate, support and promote philanthropic leadership in the community.

In August 2010, Laura McCabe retired as MC’s SIP Coordinator. “When Laura told us she was retiring, of course we wanted to throw her a party or have a dinner or just do something to let her know how much we appreciate her,” says Suzanne Thomas. “But Laura insisted she did not want anything of the kind. And no matter how hard we tried to

convince and persuade, she still insisted . . . that’s the type of person Laura is—she’s not a front and center, ‘look at me’ kind of person. She is perfectly content to work in the background performing her miracles and drawing no attention to herself. That’s one of the many things that make Laura so special to us.”

So, at the October 21 SIP Commissioning Ceremony Ms. Thomas announced that the Abell-Hanger Foundation trustees have approved the establishment of the Laura McCabe Students in Philanthropy Scholarship at Midland College. Beginning in the spring of 2011, one SIP student—upon graduation from Midland College—will be awarded a two-year scholarship in the maximum amount of \$12,500 per year in order to continue his/her education at a public Texas university or college. When announcing the scholarship, Suzanne stated, “Not only will this scholarship honor the spirit of philanthropy that George and Gladys Abell held so dear, but also will further their strong belief in education.”



2010-2011 MC Students in Philanthropy members with MC Administration, Abell-Hanger Foundation Trustees and staff, and Helen Greathouse Charitable Trust Trustees

Take the Next Step ...

log onto our Website at www.midlandcollegefoundation.org to discover how your support of our mission can change lives. Click on “Ways of Giving” in the left-hand column for the many ways you can give to MC!

You will also have the convenience of making gifts electronically with a credit card!



From left to right: David Smith, Abell-Hanger Foundation Executive Director; Suzanne Thomas, Abell-Hanger Foundation Grants Officer; and Laura McCabe. The Abell-Hanger Foundation established its first SIP Program at MC in 1997 with Laura McCabe as the program’s founding coordinator.

Business and Economic Development Center receives \$600,000 grant



Alfredo Chaparro, El Sueño Project Director (left), and Betsy Seanard, Associate Director of MC's Business and Economic Development Center (right), with Tuccia Sanchez and family in front of the Sanchez home purchased in May 2008 as a result of the BEDC's previous HSIAC grant.

The United States Department of Housing and Urban Development has awarded MC its fourth Hispanic Serving Institutions Assisting Communities (HSIAC) grant. The MC Business and Economic Development Center (BEDC), located at MC's Cogdell Learning Center, will receive \$600,000 for its project entitled *El Sueño (The Dream)*. Through this project, the BEDC will continue to provide residents of South and East Midland with assistance for affordable housing and fair housing education, credit repair services, and water/energy conservation and sustainability practices. Specifically, BEDC counselors will offer one-on-one credit and housing counseling services so that residents will become "mortgage-ready" and eligible for home purchase. In addition, the BEDC will offer South and East Midland homeowners training on energy efficient/green practices.

Midland College received its first of four HSIAC grants in 2000 for equipping labs at the Advanced Technology Center. Since that time, Alfredo Chaparro, MC Director of Community Services, and Betsy Seanard, BEDC Associate Director, have served as project directors for two additional HSIAC grants in which the BEDC partnered with five local businesses and organizations to assist 185 Midland residents to purchase homes in South and East Midland. *El Sueño* will be the third HSIAC grant directed by Mr. Chaparro and Ms. Seanard.

MC's Health Information Technology grant expands

This past April, the Office of the National Coordinator for Health Information Technology (ONC) awarded 70 grants nationally for training efforts to implement electronic healthcare records (EHRs). MC was originally awarded \$777,318 to create non-degree training programs in Health Information Technology. The Community College Consortia to Educate Health Information Technology Professionals in Health Care has now expanded MC's portion of the grant for a total of \$1,008,881! MC's six-month program, entitled HITECH, will include online training for healthcare professionals and information technology professionals throughout a large portion of Texas and all of New Mexico to meet workforce needs (50,000 more jobs anticipated nationwide). More information can be found at www.midland.edu/hitt



Texas Comptroller of Public Accounts funds \$144,500 matching grant for New Diesel Technology program

Midland College has expanded its nationally certified Automotive Technology program to include a Diesel Technology Associate Degree option. The new diesel option is being funded in part by a grant from the Texas Comptroller of Public Accounts through the Jobs and Education for Texans program. The new Diesel Technology program is housed across the street from MC's Cogdell Learning Center on Florida Street. Grant funds will be used to purchase equipment for safe and accurate skill development in this high-demand field.



Diesel Technology students at work

MC alum begins her professional career debt free

The “good life” just doesn’t happen without good jobs. Education helps determine earning and job security: 85 percent of all careers require a college degree, and 65 percent of all jobs will require additional training beyond high school. Students at Midland College are able to “finish what they start” by taking advantage of various scholarships and financial aid incentives while obtaining degrees and certificates and pursuing academic courses for transfer to major universities.

Former MC student and recent Texas Tech graduate, Amber Lubbers, was recently honored at a ceremony in which the McAuley Distinguished Engineering Student award was bestowed upon her for being the “Best Engineering Student at Texas Tech University.” Amber’s dedication in the engineering classroom and her road to being able to graduate from college debt free began at Midland College.

This brilliant young woman not only made straight A’s through a rigorous science curriculum, she also managed the financial burdens of college brilliantly. Here are some ways she did it: The Abell-Hanger Education Continuance Scholarship, Midland’s Legacy Scholarship, Midland College Ambassadors Scholarship, Students in Philanthropy

Scholarship, Student Government Association Scholarship, the Marian and Jan Jones Scholarship, the All-USA Academic Team Award, and the Math Achievement Award. These gifts are provided for MC students by the generous citizens of Midland, who believe in the importance of an education and gave their money so students like Amber could change their lives for the better.

Amber recently began her professional career working for Lockheed Martin in Palmdale, California, designing U-2 reconnaissance aircraft for the Air Force. She believes that “higher education is the key to unlock future opportunities.” Her future is unlocked, and Amber is ready to soar!



Amber receives the McAuley Distinguished Engineering Student Award at Texas Tech University

Midland College and Sul Ross State University partner to increase transfer rates

Sul Ross State University (SRSU) and Midland College (MC) are partnering to continue to increase student transfer and retention rates. A \$3,872,359 Hispanic Serving Institutions Cooperative Strengthening Institutions grant from the U.S. Department of Education will provide funding to develop and share resources to allow MC students the opportunity to earn a bachelor’s degree from SRSU without leaving Midland. Students will have convenient access to three additional 4-year degrees in high-demand fields with competitive salaries—Education, Kinesiology and Criminal Justice. In two previous cooperative grants, MC and SRSU partnered to develop degrees in Biology, Geology, Chemistry, and Math.

For the current grant, 58 SRSU courses will be converted to distance delivery format. Essential student services and the systems to assist MC students in person and online will also be developed. This third cooperative project with SRSU builds upon existing relationships between the two institutions and increases cost-effectiveness through resource sharing and collaboration.



Leave an enduring legacy to the Midland College Foundation

Please contact:
Eileen Piwetz, Executive Director
(432) 685-4526
epiwetz@midland.edu

www.midlandcollegefoundation.org

Hanley gift will provide state-of-the-art printmaking studio

MC's new drawing and printmaking instructor, Dagan Sherman, said he is thrilled with the opportunity to create a state-of-the-art printmaking studio, thanks to a very generous gift from Virginia Hanley and her husband, Alvin "Doc," who passed away Sept. 8.

"Printmaking was a rather small operation at the college up until this point, but now with this gift, we will be able to start a full program, complete with etchings, new presses, and the best equipment out there," Mr. Sherman said.

The college will continue to offer monotype printing, but Mr. Sherman said he is excited about offering a more sophisticated etching process which involves intaglio, or embossing on a copper plate with use of an acid. Mr. Sherman said that Rembrandt is probably the best example of an artist doing etchings with this method.

The Hanleys have always supported the arts in Midland. Mrs. Hanley, who has an art education degree, has been a long-time member of Midland Arts Association where she served on its board for many years. She has been a member of the Palette Club and a supporter of the Museum of the Southwest and Arts Assembly of Midland.

"I took my first Midland College class, Drawing, from Dr. Stan Jacobs when the classes were still held at the Stables at the Museum of the Southwest in the early 70s," Mrs. Hanley said. She said that is also where she took her first printmaking class and they did silkscreen and lithography.

Later she took a printmaking workshop at the college offered by Kathleen Kuchar, a Kansas printmaker who has offered many workshops at Midland College.

"I met Susan Randle, the former drawing/printmaking instructor, during the first workshop and we hit it off. When she started offering a printmaking class, I started taking it each semester," Mrs. Hanley said.

The Hanleys have given other donations to both the art and publications areas in the past. The earlier donations allowed for the purchase of needed printmaking equipment including an exposure unit, a computer, printer and scanner along with smaller purchases such as inks, solar plates, plexiglass plates, printmaking papers, and brayers.

Mr. Sherman did not know about the possible donation when he accepted the job in late August but quickly gathered information about what would be needed to upgrade the studio.

"We are so lucky to have students who love the art department this much, that they make these kinds of monetary donations," Sherman said. "What we are going to create ... a printmaking program of this stature ... is unheard of at a community college."

Mrs. Hanley said they had been planning the gift for a while but just recently decided to give the money now rather than later.

"I'm excited about renovating the printmaking space. I want the world to know how good the Midland College printmaking program is," Mrs. Hanley said.



Virginia Hanley (seated) presents check for updating MC's Printmaking Lab to Dagan Sherman, MC Art Instructor, while Dr. Eileen Piwetz, Executive Director of MC Foundation and Vice President of Institutional Advancement, looks on

Student Support Services grant provides assistance for "first-generation-to-college" students

Midland College students who are first in their families to attend college will be able to receive valuable assistance through MC's new \$1,277,525 grant. The Student Support Services (SSS) grant will serve 160 students each year for the next 5 years. The U. S. Department of Education grant provides funds to MC for academic, career and financial aid counseling. Student participants may participate in group tutoring sessions and use computer labs available in the Scharbauer Student Center. The SSS Advisor and Academic Specialists help students maximize the resources on campus and in the community.



Estate planning makes a great difference in the amount of money you pass on to loved ones and other beneficiaries, such as Midland College. Each year, friends of the college create legacies for themselves and their families through bequests to the Midland College Foundation. With careful planning, charitable deductions can create tax savings for the family estate. Tax-deductible donations can be made in the form of cash, stocks, real estate, excess retirement funds, life insurance, and other assets. As others have done, the Midland College Foundation may be named as a beneficiary in your will. To discuss your preferences, feel free to call Eileen Piwetz, Executive Director of the Midland College Foundation, at (432) 685-4526.

Collaboration of Excellence - Steinway and MC

Thanks to the gifts of generous donors like the Rea Charitable Trust and F. Marie Hall, Midland College is able to further its tradition of educational excellence and is now part of an elite group of “All-Steinway Schools.” On September 30, to commemorate this distinct designation, the Midland College Foundation hosted a piano concert by José Feghali, a Van Cliburn Piano Competition gold medalist, followed by a reception for the *Friends of the Series*.

Dr. Nicholas Elderkin, MC Assistant Professor and Director of Piano Studies, proudly states, “Our goal as a music faculty is to educate our students in the art of musical possibility—the possibility to take center stage with confidence and vitality, warmth and sensitivity, authenticity and spirit. These qualities meaningfully impact not only our students’ music, but also their personal and professional lives. Only the finest pianos—Steinway pianos—make this powerful transformation possible.”

Dr. Nicholas Elderkin, MC Assistant Professor of Piano, and Dona Bradley, Vice President & Trust Officer for Rea Charitable Trust, Wells Fargo, N.A., Wealth Management Group



MC Board of Trustees President, Ken Peeler, and his wife La Voe, with Dr. Nicholas Elderkin, MC Assistant Professor of Piano (middle) at *Friends of the Series* “All-Steinway School” reception.

“Playing on a Steinway is such a pleasurable experience. When I perform, I feel like the piano and I are one. Having the very best pianos to practice on is something that I will always cherish as I continue my piano studies here at MC.”
--MC piano student,
Glynis Barnes

Midland College Grand Piano Fund

Fortississimo

Rea Charitable Trust
Marie Hall

Fortissimo

Marthann Nobles

Forte

Vangie Lindsey

Mezzo Forte

Karen & Spencer Beal
Dr. Nick Elderkin
Nancy Hull
Carole Warren

Piano

Julie Z. Edwards
Sarah & David Grimes
Patricia & Gaylon Howard
Midland Music Teachers Association
Midland Musicians Club
Dr. Eileen & Jim Piwetz
Linda Runkles

Pianissimo

Richard Bebe
Lori & William Feeler
Mary & William Garay
Dr. Terry & Bruce Gilmour
Jesus Name United Pentecostal Church
Lucile LaLanne
Karen & Bobby Lanier
Linda & Mike Love
Christine Newman
Susan & R. Peyton Thorn
Nancy Thorne
Mary Wallace
Dr. Charlotte Whitaker

Corporate Matching Gifts

Corporate matching gifts have enabled businesses to double or triple their employees’ and retirees’ donations to education and other worthy causes. These gifts are an important source of funding for Midland College. For information on gift opportunities, contact MC Foundation Executive Director, **Eileen Piwetz** at (432) 685-4526 or by email at epiwetz@midland.edu

Shell Oil Company Foundation
Friends of the Series

Midland College Foundation Donors

August 24 - November 15, 2010

Advanced Technology Center

Abell-Hanger Foundation, Inc.
The Bosworth Company, Ltd.

Chaparral Center Renovation

The de Compiegne-Wallace Foundation

In Memory of Ray Payne
Julia & Eric Vickery

Chaparral Circle Endowment Fund

Linda & Corky Bosworth
Barbara M. Creager
Sandra & Dr. Rex C. Peebles
Carole Whitten

In Honor of:

Mary Lopez
Jeff McDonald
Melissa Mudge
Rebecca Bell

In Memory of Irene Blanton

Maricela A. Dominguez
Bahola & Tim Edwards
Cynthia & Art Morales
Dr. Eileen & Jim Piwetz
Vicki & Dr. Steve Thomas

In Memory of Jim Boldrick

The Bosworth Company,
Ltd.

In Memory of:

Lewis Corll
Jean Knight
John Deats

In Memory of Severo Enriquez

Tana Baker
Rita Nell & David Diffie
Bahola & Tim Edwards
Emma & Percy King
Midland College Student Services
Cynthia & Art Morales
Jan & Andrew Reed

In Memory of

Evelyn Rubin Gould
John & Mary Ann
McRae-Meyer

In Memory of Clyde Hammack

Jan & Andrew Reed

In Memory of Parker Humes

Dee Dee & Dr. David
Daniel
Jan & Andrew Reed

In Memory of Wayne Kennedy

J. Don Wallace

In Memory of

William (Bill) Kleine

Mary de Compiegne
Mr. & Mrs. W. L.
"Boots" Goode
Margaret & Charles
Semple
Marilyn & Joe Van Hoff

In Memory of Virginia Rutter

Mary de Compiegne
Mary Kennedy

In Memory of Relda Sale

Linda & Corky Bosworth

In Memory of Tony Salverino

Mary E. Braselton
Sylvia & Darrell Brown
Tom Corll
John Deats
Maricela Dominguez
Bahola & Tim Edwards
Dr. Terry & Bruce Gilmour
Dr. Pamela Howell
Emma & Percy King
Josh Knight
Mary Lopez
Cecilia Miranda
Cynthia & Art Morales
Dr. Eileen & Jim Piwetz
Ema Rivera
Dr. Deana Savage & Glenn
Brown
Vicki & Dr. Steve Thomas
J. Don Wallace
Dale Westfall
Joan Williams

In Memory of Terry K.

Wilderspin

Byrd Operating Company
and Employees

*Court of Honor/
Honoraria/Memorial*

Dorothy & J. D. Crawford
Violet & Mark Singh

In Memory of Mr. Buddy

Jean & Buzz Banks

In Memory of:

Dolly Hooks
Morgan Looper
Gavin Shey Morrison
Midland College Family

In Memory of Larry Wayne

McCampbell
Mary Lopez

In Memory of Ray Payne

Tom Corll
Dale Westfall

In Memory of Doris O. Tyler

Sandra &
Dr. Rex C. Peebles
Ema Rivera

*Phyllis & Bob Cowan
Performing Arts Series*

Cotton, Bledsoe, Tighe &
Dawson, PC

*Davidson
Distinguished
Lecture Series*

Midland Sixty-Six Oil Co.
Julie & Randy Stevens

*Friends of the Series
2010*

Dyan & Frank Agar
Mr. & Mrs. R. C. Banks
Charlyne Dodge
Julie Edwards
Elizabeth Elbert, M.D.
Joann & Dr. John Foster
Hazel & Marvin Gibson
Bobbie Henderson
Dr. & Mrs. Thomas A. Hyde
Virginia & Bob Jones
Midland College Bookstore
Mary & John Rheinscheld
Mr. & Mrs. A. J. Vogel
Norma Jean Walton
Betty Whitmire
Terry & Jack Wilkinson

In Memory of:

William (Bill) D. Kleine
Eleanor Scarborough
Wyoma Whitlow

*Friends of the Series
2011*

Patti & James Groce
Sandra & Dr. James Huston
Marlene & Bill Jones
Dr. & Mrs. Paul Mangum
Norma J. McGrew
Jane B. Ramsland

In Memory of Matthew Parsley
Paige & Mike Gates

*F. Marie Hall
SimLife Center*

Bethel AME Church
F. Marie Hall
Homeport LP
Joanna & Joe Thomas
Tierra Company, L.P.
The Yarrowburgh Foundation

In Memory of Clyde Hammack

John Deats
Dee Ann Decker
Kay Floyd
Dr. Nancy Hart
Nancy & Wayne Jowers
MC Cosmetology Staff
Sandra &
Dr. Rex C. Peebles
Ema Rivera

*Midland College
Foundation*

In Memory of Virginia Rutter
Patricia & J. Camden
Chancellor
Judith & Donald Markstein

Programs

Art Department

Virginia Hanley

**Early College High School
Students In Philanthropy
Program**

Abell-Hanger Foundation, Inc.

**Geology Department
Scholarship**

Joan Gawloski
Dr. Karen Waggoner

**Petroleum Professional
Development Center**

Abell-Hanger Foundation, Inc.
Paula & Jim Henry

Student Life

Audio Acoustics Hearing
Center, Inc.

Studio 3600 Series

Arts Assembly of Midland
Freda Nobles Seeker

Warren Taylor Art Project

Katie Heck

Midland College Foundation Donors

August 24 - November 15, 2010

Scholarships
Cece Brune Scholarship
In Honor of
 Mr. & Mrs. A. J. Brune
 Cheryl & Joe Vaughn

Buckner-Hearthstone Kids College Scholarship
 Dr. Nancy Hart

Dara Perry Bush, R.N., B.S.N. Nursing Scholarship
In Honor of Judy Corrigan
 Jackie & Wes Perry

In Memory of:
 Jim Boldrick
 Gloria Eng
 Bettie Hamm
 Ralph Meriwether
 Alois Munzer
 Matthew Parsley
 Reu Richards
 Terry Wilderspin
 Jackie & Wes Perry

Patricia Lechwar Byrd Memorial Scholarship
In Memory of
 Patricia Sue Byrd
 Juandelle Lacy Roberts

Dragisic Memorial Scholarship
 Campbell Construction Company

Severo Enriquez Scholarship
In Memory of Severo Enriquez
 Anonymous

General Nursing Scholarship
In Memory of Rilla McBroom
 Linda & Corky Bosworth

In Memory of Monetta Wilson
 Chrys & Kelly Beal

Dr. Celia Harris Nursing Scholarship
In Memory of:
 Don Farris
 Charles Garrett
 Dr. Celia Harris

David Hoy Harrison Music Scholarship
 Estate of Helen G. Harrison

Marie Hinkle Scholarship
In Memory of:
 Audra Cary
 Dorothy Foster
 JoAnne & Don McClurg

Midland's Legacy Scholarship Program
 Abell-Hanger Foundation, Inc.

Midland Northside Lions Club Scholarship
 Midland Northside Lions Club

Frances and Lee Morris ABE/GED Scholarship
 Dr. Nancy Hart

Music Department Scholarship
 Anonymous
 Glynis Barnes
 John Deats
 Rita Nell Diffie
 Dr. Nicholas Elderkin
 Lori & William Feeler
 Peggy Jones
 Keystone Class / St. Luke's
 United Methodist Church

Daniel Martinez
 Kristi Serrano
 Dagan Sherman
 Bill Stella
 J. Don Wallace
 Brenda Walzier
 Matthew Webb
 Joe Willis

Jack B. Nobles Endowed Scholarship
In Memory of Jack B. Nobles
 Marthann Nobles

Permian Basin Texas Society of CPA's Scholarship
 Permian Basin Chapter Texas Society of CPA's

Petroleum Accountants Society of the Permian Basin Scholarship
 Petroleum Accountants Society of the Permian Basin

Petroleum Energy Technician Scholarship
 Chevron

Scholars' Dollars-2010
 Linebarger Goggan Blair & Sampson, LLP
 Dr. Subodh Mallik
 Mi Casita
 Dr. Hulon H. Pass
 Sandridge Operating Co.
 Mr. & Mrs. Joe Shuster
 Ann Stapp
 Brenda Mowry-Tipton
 Clayton W. Williams, Jr.

Special Scholarship
 Mary Lee Hammond

In Memory of
 William (Bill) D. Kleine
 Virginia & Bob Jones

Students in Philanthropy Scholarship
 Abell-Hanger Foundation, Inc.
 Anonymous
 The Bar
 Boomerang Trucking
 Caprock Laboratories, Inc.
 The Brittany & Caleb Combs Family
 Cotton Flat Baptist Church
 Don Crawford & Associates
 Darville Air Conditioning & Plumbing
 Fite Fire & Safety
 Holiday Pools
 Mark Dettman
 Hunter Aggregates, Inc.
 John's Automotive & Service Center
 Midland Pediatric Associates
 Peyton's Bikes
 Pioneer Natural Resources USA, Inc.
 Premier Wire Fence, Ltd.
 Reliant Holdings, LTD
 The Spotted Leopard
 Subway
 West Texas National Investment Professionals

Veterinary Technology Scholarship
 James A. "Buddy" Davidson Charitable Foundation

David Watkins Music Scholarship
 Charles R. Crawley
 K. Gregg Smith

C. Mark and J'Lynn Newman Wheeler Family Foundation Scholarship
 Dr. Nancy Hart

Athletic Programs
Dr. Al G. Langford Athletic Endowment Fund
In Honor of
 Lance Langford Family
 Jade & Gregory Ausley

In Memory of Severo Enriquez
 Dr. Terry & Bruce Gilmour
 Mary Lopez
 Jan & Andrew Reed

In Memory of Virginia Rutter
 Tommie R. Strack

Baseball Program
 Mrs. E. D. Adcock
 Okey Akpom
 Barbara Albright
 James Alexander
 Evangelina & Gabriel Anaya
 Terri & Gary Ashby
 Dorothy Baker
 Johnny Barrow
 Mary & Joseph Bartos
 BCCL Royalties LP
 G. H. Bejarano
 Arleen Benavidez
 Randal Billings, O.D.
 Donna & Kim Billingsley
 Mr. & Mrs. Charles Bird
 Norma & Robert Booth
 Bostick Roofing and Sheet Metal Company
 John Bricker
 Robin & Lance Brinkley
 Maggie & Greg Carney
 Caulking Company
 Rebecca & Paul Cene
 Mary & Anthony Cepak
 Nancy Davis
 Kathleen Depweg
 Suzanne & Bob Doolittle
 Marcia & V. Duane Eads
 Hendrick Family
 Elizabeth & Reno Ferri
 Maria & Manuel Figueiredo
 Victoria & Richard Fischenich
 Sandra & Gerald Fitzhugh
 Irma & Silvano Garcia
 Karen & George Gembler
 Karen & Rocky Gonzalez

Continued on page 16

Midland College Foundation Donors

Continued from page 15

Rose & Tommy Gonzalez
 Donna Grohman
 Billy D. Hall
 Billy Jack Hall
 Amy & Scott Harrison
 Joni & Kyle Harvey
 Hinton Well Service
 N. Holloway
 Corina Humphreys
 Anna & Brady Johnson
 Maryann & Jerry Jurcisin
 Janet & Edwin Kelley
 Diana & Phillip Kirby
 Florence & Chester Kozen
 William Kramp, Jr.
 Roxan Labbe
 Mr. & Mrs. William Lamb
 Salley & Tommy Long
 Emma & Javier Longoria
 Olaya & Andrew Longoria
 Dolores & Arthur Lopez
 Jane & David Loter
 Kathy & Pat Loter
 Peggy & Harley Maberry
 Larry Marshall
 Marcos Martinez
 Toni & Todd Mattozzi
 Tammy McFarland
 Pamela & Kenny McKay
 Sharon McMillan
 Sherri & Steve McMillan
 Renee & Alan Means
 Ruth & William Meech
 Mella Menton
 Catherine & George Mitchell
 J. Mitchell
 Jane & James Monahan
 Olivia & Mario Montoya
 Kaye & Kevin Nasset
 Dana & Richard Near
 Betty & Thurman Neill
 Oil Dog Pipe Rentals, LP
 Betty Patrick
 Mr. & Mrs. Kenneth Pearson
 Irene & Victor Perez
 Mary Jo & Gerald Petras
 Bonnie Popnoe
 Dina & Larry Pyle
 Nancy & Dorman Reed
 Shelley Reep
 A. Richburg
 Cheryl & Robert Roark
 Dianne & Larry Robbins
 Vicky & Tim Robins
 Tammy & Mike Rockafellow
 Patrick Rogers

Ricardo Saenz
 Edward Salas
 Gilbert Salas
 Eva & Abel Salazar
 Andre Sanchez
 Shanahan Limited Partnership
 Sharp Electric
 Lucy & Donald Sheffield
 Norman Shulman
 William Small
 Laurie Smelser
 Mary Smelser
 Susan & Reynaldo Soto
 Spanish Dagger LTD.
 David M. Stark, M.D.
 Rita Staton
 Belle Stewart
 Jennifer Stewart
 Jennifer & Eddie Stewart
 Linda & Frank Stone
 Haley & Logan Stout
 Judith & John Ulicney
 Victor Vela, M.D., P.A.
 Teresa & Larry Wall
 Patricia & Charles Ward
 C. Edwin Wentz, D.D.S., P.A.
 Sandra & Glennon Wibracht
 Brianna Wielbruda
 Deborah & Leon Wielbruda
 Judy & Raymond Wieser
 Peggy & Bill Williams
 Karen & Shawn Wright
 Dana & Jeffrey Young
 Linda & C. W. Young
 Isabel Zabala
 G. Zokle, Jr.
 Lorena & Allan Zuehl

Lady Chaps Basketball Program

Abbott Development Company
 Forrest Allen
 Lisa & Bobby Anderson
 Beth & George Barton
 Jennifer & Michel Bell
 Angela & Monte Biedermann
 Lisa & William Bridgeforth
 Becky & Bruce Brown
 Stephanie Brown
 Jacque & Roger Bryant
 O. Doyle Butler
 P. Carmical
 Sandra Caro
 Elia & Tony Carrillo
 Teresa & Steven Cluss
 Donald Cobb

Genevieve Cowden
 Janette & Mac Davis
 Rita Nell Diffie
 Jessica Dotsen
 Michael & Joan Dyer
 Webb Farish
 Farrell Fenner, EA, PLLC
 Debra Fields
 Lula Finch
 Dr. Terry & Bruce Gilmour
 Dennis & Clifford Halfmann
 Ann & Joseph Hayden
 Amy Herring
 Rhonda Hill
 Linda & Kevin Hirt
 Karen & Doak Ivy
 Joyce & Lowell Johnston
 P. King
 Dana & Steve Kiser
 C. Koonce
 Dora Longoria
 Jennifer & Dr. Paul Mangum
 Marie McDougall
 Beulah & Quanique McNeil
 Debbie & Mike Moore
 Dorothy & James Moring
 Joan & Rory Niehues
 K. D. Osborn
 Gerald Radde DVM PC
 Lindi Rance
 Mary Ellen & Karl Reagan
 Hector Rodriguez
 Betty Schwartz
 Cecilia & James Schwartz
 Gail & Joe Schwartz
 Nanette & Dennis Sever
 Roy E. Smith
 Sabrina & Donald Tally
 Bonnie Thompson
 Karen & Robert Vest
 Julia & Eric Vickery
 Benjamin Walker
 Eboni Walker
 Vonda White
 Peggy & Bill Williams
 Peggy Wood
 Rebecca & Strudwick Young

Softball Program

Ann & Gerald Agajanian
 Nellie Agajanian
 Charis & Samuel Akiona
 Ernest Amezcua
 Esperanza & Marcelino Aragon
 Sylvia & Thomas Aragon

Alma Ayala
 B & D Auto D. Jones
 Enterprise, Inc.
 David Barile
 Pilar & David Bashor
 Sarah & Patrick Brown
 Budget Blinds of Fullerton
 Abigail & Richard Cabral
 Rosemarie Colson
 Henry Cuaz
 Day N Nite Transportation
 Robert de Leon
 Duke's Garage Doors, Inc.
 Vicki & Pdraig Ennis
 Jesus Estrada
 Mary Lou Flores
 Marilyn Gill
 Lisa & Brandon Helzer
 Pamela Helzer
 Mary & Donald Hitzeman
 Abigail & Luis Juarez
 Archidalia Kawaa
 Elzadia & Mitchell Keawe
 Ivanelle & Robert Kuakini
 Alfred Lares
 Cristy & Eduardo Lares
 Rita Leon
 Patricia & Alejandro Lopez
 Danelle & Ernest Macias
 Eva & Silver Macias
 Julie & Darren Marcoux
 J. J. Martinez
 Joel Martinez
 Midland Rockhounds Baseball Club
 Martina & Raymond Navarro
 Donna & John Nicholas
 Kathleen & Arthur Patrick
 Stephanie & Jack Penneau
 J. H. Phelps, M.D.
 B. Renteria
 Retrofit Technology, Inc.
 Christina & Richard Rios
 Rebeka & Daniel Rodriguez
 Carmen Serrano
 Kay & Joe Serrano
 Sisneros Trucking Company
 Lisa & Gilbert Unger
 Joan Urban
 Visalia Tire & Wheel
 Shirley Warner
 Kristina & Roger Woodward
 Zepeda Plumbing Construction Company, Inc.