



Clarion Clarion Clarion

3600 N. Garfield

Midland, Texas 79705

(432) 685-4526 www.midlandcollegefoundation.org

MIDLAND COLLEGE
FOUNDATION

In This Issue

Longtime Students in Philanthropy leader retires - page 3

Kay Rankin sets up book scholarship to honor parents - page 8

NEW This Fall!

DAVIDSON
distinguished lecture series

Colonel Eileen Collins

First Woman to Pilot and Command an American Spacecraft

"Exploring the Great Beyond: From Apollo to Discovery"

PHYLLIS & BOB COWAN
performing arts series

Garrison Keillor

Best-Selling Author and Host of

"A Prairie Home Companion"

Details on page 4

Rea Charitable Trust helps establish the Bryce and Isabel McClintic Rea Center for Music Technology and Creativity

The Rea Charitable Trust recently donated \$500,000 to the Midland College Grand Piano Fund, launched by MC Instructor of Music, Dr. Nicholas Elderkin. Named for Bryce Rea—who died in 2006, and Isabel Rea, who passed away in 2004—the Rea Charitable Trust was established to fulfill Isabel's philanthropy for future generations, giving preference to promotion of the arts.



Isabel Rea

Isabel McClintic Rea grew up in Midland and was the daughter of Mr. and Mrs. Charles McClintic, a long time ranching family. Isabel studied music in Virginia, following in the footsteps of her father. She was known as one of Midland's most talented pianists, and was an avid supporter of the arts. "This grant to fund the purchase of Steinway Artist pianos is a reflection of that interest," said Dona Bradley, Vice President and Trust Officer of Wells Fargo Bank.

These funds will be used for a transformation of the MC Music Department. Nine acoustic pianos will be purchased: three Steinway grands—one of which was signed by world-renowned pianist Van Cliburn, one Steinway upright, two Boston grands designed by Steinway, and three Boston uprights.

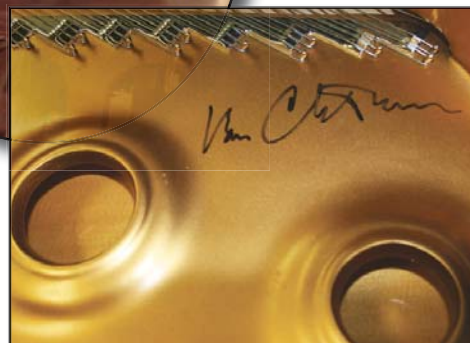
Four of the pianos will come equipped with PianoDisc: Opus 7, a wireless multimedia system which allows the pianist to record and play back their exact performance. MC students will be able to track their progress themselves and rehearse duets with a "virtual" second pianist! In addition, a Roland Digital/Acoustic Hybrid will be installed in the band hall, allowing Rabon Bewley, MC Director of Instrumental Studies, to demonstrate any piece of orchestra or jazz music.

These pianos will move MC toward its goal of becoming an "All Steinway School," and allow for the creation of the new Bryce and Isabel McClintic Rea Center for Music Technology and Creativity (CMTC). This resource—with 11 music workstations, each with keyboard and computer—will serve as a fully-outfitted music lab. "The CMTC will thrust students into a world of endless creative possibilities. It will allow students to compose, edit, and record music in a riveting hands-on learning environment," said Dr. Elderkin.

This is actually the fifth gift the College has received from the Rea

family! In 2002, Isabel and Bryce established the Rea Music Scholarship. Combined with this most recent grant from the Rea Charitable Trust, their total giving equals \$630,000. "Our vision has always been to put excellent higher education

opportunities within reach of all our students, regardless of background. With this generous gift from the Rea family, our vision will become a reality and our students will achieve their dreams," said Dr. Elderkin.



MC's newest piano: A Steinway signed by Van Cliburn!

Midland College Foundation Board Officers

President

Richard T. McMillan, Esq.

Vice President

Glenn Rogers, D.D.S.

Directors

Gregory Bartha, M.D.

Spencer Beal

Mike Black

Jack E. Brown

Arnulfo T. Carrasco, M.D.

Linda Cowden

H. Joseph de Compiegne

Joann E. Foster

Marie Hall

Jim Henry

Tevis Herd, Esq.

Cadell Liedtke

Vangie Lindsey

William Marshall

T. B. O'Brien

Beverly Pevehouse

Clarence Scharbauer III

Steve Thomas, Ph.D.

Carole Warren

Ralph L. Way

Terry Wilkinson

Modesta Williams

Word Wilson

Staff

Executive Director

Eileen Piwetz, Ed.D.

Administrative Assistant

Cynthia Morales, C.P.S.

Secretary

Maricela Dominguez

Clarion Editor

Nancy Thorne

Design/Layout

Chris Hieb

Photographers

J. Don Wallace

Katherine Inskeep

Contributor

Rebecca Bell



The Midland College
Foundation
may be contacted at:
(432) 685-4526
(432) 685-4714 (Fax)
epiwetz@midland.edu

www.midlandcollegefoundation.org

**Midland College
Open
House**

**Thursday, October 7, 2010
4:00 - 6:00 p.m.**

*The pieces have all come together
with the completion of
Midland College's
\$41.8 million bond
package*

**Thank you,
Midland!**

Linda Cowden appointed as new MC Trustee

At a special meeting of the Midland College Board of Trustees on Tuesday, July 20, an ad-hoc committee nominated long-time Midlander Linda Cowden to complete the unexpired term of Joann Foster as Place 2 on the MC Board of Trustees. Her nomination was unanimously approved, and Ms. Cowden was sworn in on August 17.

Ms. Cowden was chosen because of her interest in the College and her leadership to help pass MC's \$41.8 million bond in May 2005. She is also a member of the Midland



College Foundation Board, having served since 2006. Her father, Frank Cowden, Jr., also served on the MC Foundation Board from 1979 – 1985. In an interview with the *Midland Reporter-Telegram*, Ms. Cowden stated that Midland College is an exceptional college and can be a resource to everyone. She explained that MC offers a chance for an affordable education and gives residents of outlying communities a chance to go to college. "It is a huge asset that can benefit everybody," she said.

Estate Planning assists attorneys and accountants

Estate planning is one of the most important, but often overlooked, components of one's financial planning. If done conscientiously, with forethought, estate planning allows an individual's earnings to provide opportunities to others even after they are gone! Many, many Midland College students have received scholarships from estate gifts which have changed their lives for the better ... because they have been allowed access to higher education! Estate gifts have also been given to the College which help our state-of-the-art facilities, laboratories and programs grow!

This past May, the MC Foundation held its annual Estate Planning Seminar for legal and financial professionals. This complimentary continuing education seminar, also sponsored by the Midland Memorial Foundation, provided 6.75 hours of Mandatory Continuing Legal Education credit approved by the

State Bar of Texas, as well as nine hours of Continuing Professional Education credit for accountants. Seminar topics—Marital Property Agreements, Grantor Trust Planning, Family Limited Partnerships and Bypass Trusts and many others—help lawyers and financial planners stay savvy with current trends and legislation, and allow them to provide the best possible financial advice and estate planning to their clients.



MC Foundation Executive Director Dr. Eileen Piwetz with MC Foundation President Richard T. "Dick" McMillan at the Estate Planning Seminar

Longtime Students in Philanthropy leader retires

After 13 years as Students in Philanthropy (SIP) Coordinator, Laura McCabe retired this past August. “My work with Midland College Students in Philanthropy has been such a joy to me!” said Laura. “I am humbled by the expressions of deep kindness and compassion for others that these students exhibit ... where ever they land in life, it is my hope that they will continue their philanthropic giving in their chosen communities!” SIP represents a unique and long-standing educational partnership between MC and the Abell-Hanger Foundation, who founded SIP in 1997. “Laura helped shape the program in a perfect manner,” said Abell-Hanger Foundation Executive Director David Smith. “She’s a true believer in philanthropy and volunteerism. In terms of the role she played, I cannot think of another person who could have done a better job.”

Her legacy of leadership will live on through the many students she has mentored and taught the art and practice of philanthropy. “Watching Laura work with the SIP students is breathtaking—she helps them enhance their decision-making and leadership skills—always with flexibility and caring. SIP students have been Mrs. McCabe’s passion for 13 years and we will miss her,” said MC Foundation Executive Director and Vice President of Institutional Advancement Dr. Eileen Piwetz.

“Laura has been such an inspiration to a lot of students ... she has been the cornerstone of the SIP program,” said Suzanne Thomas, Grants Officer and SIP Program Coordinator for the Abell-Hanger Foundation. In 2006, the Helen Great-house Charitable Trust joined in funding SIP. Since its inception, the SIP members have reviewed a total of 376 grant applications, resulting in 219 grants funded, for a total of \$241,846 in monies raised and awarded to area nonprofits! SIP will be in good hands under the leadership of Julia Vickery, who has been with Midland College since 1997, most recently as Student Life Director. “I know Julia will do a great job ... we’re very optimistic about the future,” said David Smith.



Laura McCabe, at center holding plaque, at the 10th anniversary celebration of SIP

Dalious Fund pays for professional development conferences

In addition to the many grants awarded, the MC Foundation Board awarded \$20,415.06 from the Dalious Professional Development Fund, established from the Estate of Ella Mae Dalious,



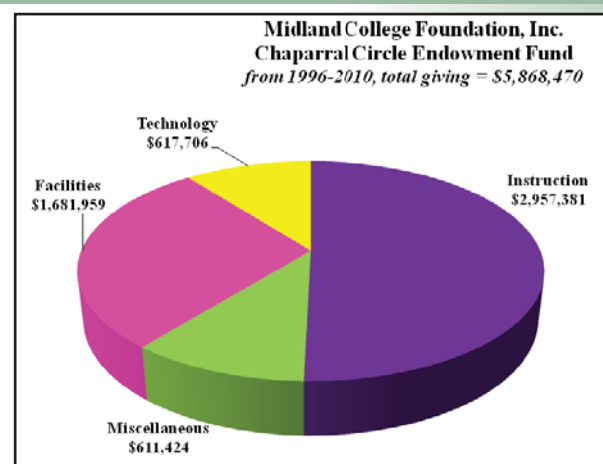
for professional development to the following faculty members, so they could attend conferences across the country:

- Laura Latham-McKenzie, English Assistant Professor—The Teaching Professor, Cambridge, Massachusetts
- Andree Rosen, Paralegal Professor—American Association of Paralegal Educators Conference, Indianapolis, Indiana
- Valerie Steiner—Associate Degree Nursing Interim Director and Professor II—NLNAC Education Summit: Reforming Health Care: The Power of Nurse Education, Las Vegas, Nevada
- Chesly Herd, Alcohol Drug Abuse Counseling Program Director and Instructor—Midwest Conference on Behavioral & Addictive Disorders, Chicago, Illinois
- Lea Keesee, Cindy Madewell, Leland Hart & Tracy Davis, Health Sciences Faculty—Image Perspectives: The Injury Simulation People, Carson City, Nevada
- Mary Braselton, Associate of Arts in Teaching Director—National Association of Community College Teacher Educator Programs, Baltimore, Maryland

Congratulations to all of these programs and faculty members. And, a HUGE thanks from Midland College employees to the Midland College Foundation for making it all possible!!

Foundation grants continue to keep MC at the cutting edge of education

Since it was established in 1996, The Chaparral Circle Endowment Fund (CCEF) has provided close to \$6 million in funding to Midland College programs (see pie chart at right). This past spring, the Midland College Foundation awarded \$124,135 from the CCEF, to assist numerous MC programs in their worthwhile causes and plans for growth. The CCEF funding is one of the main reasons Midland College stays at the cutting edge of education and technological advancement!





Colonel Eileen Collins

First Woman to Pilot and Command an American Spacecraft
“Exploring the Great Beyond: From Apollo to Discovery”

Thursday, September 16, 2010
7:30 p.m.

Al G. Langford Chaparral Center

Astronaut Eileen Collins is the first woman to pilot and command an American spacecraft. In July 2005, Collins commanded Space Shuttle Discovery’s historic “Return to Flight” mission. This was NASA’s first manned flight following the February 2003 loss of the Shuttle Columbia.

Collins dreamed of becoming a pilot during her childhood in Elmira, New York. She read every book she could on aviation, and when she got her first job at 16, she started saving money for flying lessons.

“I had saved up \$1,000, and I took that to my local airport, at age 19,” she said. “I asked them to teach me how to fly.”

Her family lacked the funds to send her away to college, so Collins earned an associate degree in mathematics and science at Corning Community College, and then earned a bachelor degree in mathematics and economics from Syracuse University. Collins then entered the Air Force Undergraduate Pilot Training Program in 1978,

the same year that NASA opened the Shuttle program to women. Collins spent several years in the Air Force and earned masters degrees in operations research from Stanford University and space systems management from Webster University. In 1990, she was selected for NASA’s astronaut program.

Collins achieved her dream of becoming an astronaut in July 1991. She flew on her first Shuttle mission, STS-63 Discovery, in February 1995, as the first woman ever to pilot a Space Shuttle. In July 1999, Collins achieved another milestone by becoming the first woman ever to command a Shuttle mission, STS-93 Columbia.

Upon receiving the National Space Trophy in March 2006, Collins spoke of a new dream: “My dream, now, is that people will discover and invent new ways to fly higher, faster, and farther ... and we will do it because we are explorers by nature.”

PHYLLIS & BOB COWAN

performing arts series

Garrison Keillor was born in 1942 in Anoka, Minnesota, and began his radio career as a freshman at the University of Minnesota. He went to work for Minnesota Public Radio in 1969, and on July 6, 1974, he hosted the first broadcast of *A Prairie Home Companion* in St. Paul. Over 3 million listeners on more than 450 public radio stations now hear the show each week. In June of 2006, a movie adaptation—in which Keillor played himself!—was made of this beloved radio production.

He is also the author of many books, including *Lake Wobegon Days*, *The Book of Guys*, *Wobegon Boy*, *Liberty: A Lake Wobegon Novel*, and *Life Among the Lutherans*.

Keillor has received numerous awards, including a Grammy Award for his recording of *Lake Wobegon Days*. He has also received two Cable ACE Awards



Garrison Keillor

Best-Selling Author and Host of
“A Prairie Home Companion”

Monday, October 18, 2010
7:00 p.m.

Al G. Langford Chaparral Center

and a George Foster Peabody Award. In 1994, he was inducted into the Radio Hall of Fame at Chicago’s Museum of Broadcast Communications.

With Philip Brunelle, he has performed with many orchestras including the Chicago, Milwaukee, San Francisco, Pittsburgh, Minnesota, Dallas, and National symphonies. He has appeared at Wolf Trap, Carnegie Hall, and other major concert halls as a member of The Hopeful Gospel Quartet, and he has performed on his own in one-man shows across the country and on tour broadcasts of *A Prairie Home Companion*.

**COMING in
Spring 2011!**

DAVIDSON

distinguished lecture series



Celia Sandys
Sir Winston Churchill's Granddaughter
"Memories of my Grandfather
at Home and Abroad"

Thursday, March 24, 2011
7:30 p.m.

Al G. Langford Chaparral Center

Celia Sandys, daughter of Sir Winston Churchill's eldest child, Diana, and Cabinet Minister Duncan Sandys, is an internationally acclaimed author, journalist, television presenter and speaker. She is now organizing a series of exclusive tours based on her grandfather's travels around the world.

Celia has published five books on Winston Churchill, which combine intensive research with personal anecdotes from her time with him in England and abroad. Her most recent book, *We Shall Not Fail - The Inspiring Leadership of Winston Churchill*, describes his role as Britain's Prime Minister from 1940 to 1945, in which he led his country, and the rest of the free world, to victory against Nazi Germany in World War II.

Another of her books, *Chasing Churchill*, is the basis for a documentary which was first aired on PBS in the USA and on the Discovery Channel in the UK in 2008.

Presented and narrated by Celia Sandys, the program describes her grandfather's extensive military, political and private travels across the world. The program presents a riveting portrait of one of the 20th Century's iconic figures, as painted by someone who knew him as "Grandpapa."

Drawing on her intimate knowledge of Winston Churchill's personal and political life, her speeches are often accompanied by excerpts from some of her grandfather's speeches as well as photographs and other material drawn from her private collection. Her lecture at Midland College, "Memories of My Grandfather At Home and Abroad," is one of her most popular!

All events in the Lecture Series and the Performing Arts Series are FREE and open to the public. For more information, please call (432) 685-4526, or see us online at www.midlandcollegefoundation.org

PHYLLIS & BOB COWAN

performing arts series

The Moscow Festival Ballet was founded in 1989 when legendary principal dancer of the Bolshoi Ballet, Sergei Radchenko, sought to realize his vision of bringing together the highest classical elements of the great Bolshoi and Kirov Ballet companies. This independent new company still holds within the framework of Russian classic ballet.

Leading dancers from across Russia have forged under Radchenko's direction an exciting company staging new productions of classics such as *Giselle*, *Don Quixote*, *Paquita* and *Carmen*.

Since its inception, the Moscow Festival Ballet has completed two tours of Europe, with extraordinary receptions in Italy, France, Spain, Germany and the Netherlands. Two tours of the United Kingdom, including capacity audiences at London's famed Coliseum, have resulted in numerous re-engagements.



A Columbia Artists Production
Direct from Moscow, Russia

Moscow Festival Ballet

Company of 50
Presents

"The Sleeping Beauty"

Monday, May 2, 2011
7:00 p.m.

Al G. Langford Chaparral Center

The company has also performed with great success in Turkey at the Istanbul Festival and in Greece at the Athens Festival, and recently completed a two-month tour of Japan, Korea, Singapore and Hong Kong. Under the direction of Sergei Radchenko, the Moscow Festival Ballet continues to expand its repertoire. In addition to commissioning new works from within Russia and abroad, the company specializes in Twentieth Century full-length ballets such as *Cinderella*, *Romeo and Juliet*, *Legend of Love*, *Stone Flower* and *The Golden Age*.

Clarion

In memory of...

Virginia Rutter

Virginia Rutter died on July 14, 2010.

Before moving to Midland in 1949 as a young bride, Virginia attended Boston University. Mrs. Rutter's love of learning continued all her life. She took many courses at Midland College and especially loved taking English classes where she excelled and won many writing awards.

Virginia is survived by her husband of 63 years, A. William Rutter, Jr., and her four children, Robin Rutter Coleburn, Bill Rutter III, Paul Warren Rutter, and Christopher Thomas Rutter. She will be missed by many who knew her keen sense of humor and her generosity. Memorials may be directed to the Midland College Foundation.



Monetta Bradshaw Wilson

Monetta Bradshaw Wilson died May 13, 2010.

Mrs. Bradshaw's many passions included interior design, traveling, bridge, tennis, and polo. Other special interests were horses, cooking, music, and working in her garden.

Survivors include sons Mike H. Wilson and wife Laura Ann; Byron B. Wilson and wife Laura; and Monetta's beloved dog Sissy. Memorials may be directed to the Midland College Nursing Scholarship Fund.



General Nursing Scholarship

Linda & Corky Bosworth	Hazel, Bea Lea & J. Keith
Mr. & Mrs. Frank Kell	Somerville
Cahoon	Betty & Jim Whitten
Teresa Griffin	Deborah Wilkinson
Joanie Holt	J.W. Wilson, S.P.
Cynthia & Cecil Preas	

Dara Perry Bush, R.N., B.S.N. Nursing Scholarship

Jackie & Wes Perry

Special Scholarship

Marthann Nobles

Midland College Foundation

Kay & Bob Bivens	Hi-Sky R/C Club
Fredda L. Black	Joanie Holt
Carol Jo & Jack E. Blake	Ann & Erd Johnson
Byrd Operating Company & Employees	Marion & John Kimberly
Mr. & Mrs. Frank Kell Cahoon	Pam & Bob Leibrock
CBS Insurance LLP	Edwin H. Magruder, Jr.
Carolyn & Kenneth Coleburn	Cynthia & Art Morales
June Cowden	Dr. & Mrs. Eric Olson
Maricela Dominguez	Beverly Pevehouse
Betty & Arlen Edgar	Dr. Eileen & Jim Piwetz
The Exchange Club of Midland	Quanah Exploration, LLC
Jheri Fleet	Louan & Glenn Rogers
Mr. & Mrs. "Boots" Goode	Bill Rogers
Lisa Gosselin	Charlotte & John Seay
Sarah Lew & David Grimes	Dr. & Mrs. Tulsi Dyal Singh
	William M. Wallace
	Mr. & Mrs. Grady Wilbanks, Jr.

Dara Perry Bush, R.N., B.S.N. Nursing Scholarship

Jackie & Wes Perry

Special Scholarship

Marthann Nobles

Rilla Marie McBroom

Rilla Marie McBroom, one of the first graduates of the MC Vocational Nursing program, died on May 20, 2010.

Mrs. McBroom was a dedicated nurse during her professional career; even after her retirement, Mrs. McBroom continued to volunteer within the medical community. Dr. Celia Harris, retired MC Nursing instructor and one of the founders of MC's Associate Degree Nursing program, states, "Rilla personified the qualities of integrity, compassion, morality, selflessness, and industry that we desire in nurses who administer care to us. She honored nursing as a profession. Despite difficult personal circumstances, she had a delightfully keen wit and a sustaining trust in her Savior."

Rilla is survived by her sons, Tommy and Mike, and her daughter, LouAnn McBroom Potter, who is a graduate of MC's Associate Degree Nursing program. Memorials may be directed to the Dr. Celia Harris Nursing Scholarship Fund.



Dr. Celia Harris Nursing Scholarship

Mary & Richard Greth
Dr. Celia Harris
Lou Ann Potter

Court of Honor/Honoraria/Memorial

Dr. Andrea Zabel

Health Sciences Simulation Center

Rebecca Bell	Dr. Pamela Howell
Rita Nell & David Diffie	Mr. & Mrs. Robin Julien
Jenny & Phil W. Ebensberger	Mary Lopez
Pervis Evans	Maura & Ed Penz
Jeanette & Gavin Frantz	Dr. Eileen & Jim Piwetz
Sylvia Ann Gray	Dr. Deana Savage & Glenn Brown
Bill Heathman	Lisa & Mike Stevens

Clyde Hammack

Leonard Clyde Hammack, husband of Midland College Dean of Health Sciences Dr. Becky Hammack, died Thursday, August 5, 2010.

Clyde married Becky in 1987, and together they raised seven children.

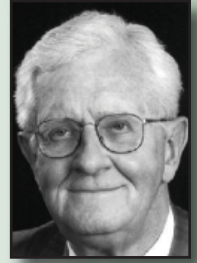
After his retirement from Lockheed Martin in 1996, Clyde enjoyed playing golf and helping people with car repairs.

Memorials may be made to the Midland College Health Sciences Simulation Center.



In memory of...

William Kleine



William (Bill) D. Kleine, Midland College Foundation Board member and former trustee of the Board, passed away Friday, June, 25, 2010.

Mr. Kleine served on the MC Board of Trustees from 1980 to 2006, serving as Board Secretary, Vice President, and President. He was a member of the MC Foundation Board since 1981 and served as Foundation Board Secretary from 1996 until his death.

Bill was a part of the Midland "scene" for many years and was active in many Midland organizations. His great loves were his beloved wife Ann of 48 years and their family, his church and being a part of the Midland oil fraternity.

Chaparral Circle Endowment Fund			Friends of the Series 2010
Gregory W. Bartha, M.D. Mary & Barry Beck Linda & Corky Bosworth The Bosworth Company, Ltd. Wanda Campbell Bill C. Cotner Dee Dee & Dr. David Daniel Rita Nell & David Diffie Norma & Torivio Duran Betty & Arlen Edgar Bahola & Tim Edwards Mrs. Thornton Hardie	Sarah & H. R. Holcomb Dr. Pamela Howell Jack Huff Linda & Ron Jose Patti & Watson LaForce Nancy & Dr. Al G. Langford Pam & Bob Leibrock Mary Lopez Edwin H. Magruder Mr. & Mrs. William Marshall Mr. & Mrs. Richard McMillan	Cynthia & Art Morales Dorothy & Jim Moring La Voe & Ken Peeler Dr. Eileen & Jim Piwetz Louan & Glenn Rogers Dr. Deana Savage & Glenn Brown Betsy Seanard Vicki & Dr. Steve Thomas Schatzie & Charlie Tighe Ann & Ralph Way Mr. & Mrs. Roy Williamson	Peggy & Bob Cowan
			Dragisic Memorial Scholarship
			Jeanette & Thomas Dragisic Family
			Special Scholarship
			Anne Mewhorter
			Dara Perry Bush, R.N., B.S.N. Nursing Scholarship
			Jackie & Wes Perry

Parker Humes

Parker Morell Humes, former Midland College Board Trustee, passed away July 11, 2010.

Parker's belief in the power of education and his family's commitment to the teaching profession led to his meaningful work for the Midland community through his tenure on the Midland Independent School Board. After leaving the MISD Board in 1986, he was elected as a trustee of Midland College from 1986 to 2000, where he served two terms as Board President.

Mr. Humes enjoyed a successful career in the radio broadcasting business and was equally passionate about the Midland community. He is survived by his wife of 49 years, Pat Humes, and three daughters: Paige Humes LeMasters of Abilene, Texas; Pamela Humes of Midland; and Trish Humes Speight of Midland.



Wayne L. Kennedy

Wayne L. (Dadoo) Kennedy passed away Monday, May 31, 2010.

His commitment to education was demonstrated throughout his 43 years of service as a teacher and elementary administrator in Snyder, Texas.

Wayne is survived by his wife Peggy, his brother Ronnie, and sons Sean, Damon, and Brett. The nickname, Dadoo was coined by Wayne's granddaughters, and throughout the years, many grew to know him by this name.

Donations may be made to the Jerry Mills Faculty Development Fund at Midland College.



Chaparral Circle Endowment Fund	
Nancy & Dr. Al Langford Mary & James Mims Cynthia & Art Morales La Voe & Ken Peeler Dr. Eileen & Jim Piwetz	Louan & Glenn Rogers Vicki & Dr. Steve Thomas Ann & Ralph Way Dale Westfall
Dara Perry Bush, R.N., B.S.N. Nursing Scholarship	
Jackie & Wes Perry	
Health Sciences Simulation Center	
Dr. Deana Savage & Glenn Brown	

Jerry Mills Faculty Development Fund	Court of Honor/Honoraria/Memorial
Katherine Allen Rita Nell & David Diffie Norma & Torivio Duran Dr. Terry & Bruce Gilmour Sylvia Ann Gray Dr. Pamela Howell Jan Johnston Michael Makowsky Paula Marshall-Gray Sandra & Dr. Rex C. Peebles Dr. Eileen & Jim Piwetz Nell & Ken Pollard Jan & Andrew Reed Julia & Eric Vickery	Terry Clemmer Emma & Percy King Mary Lopez

Take the Next Step ...

log onto our Website at www.midlandcollegefoundation.org to discover how your support of our mission can change lives. Click on "Ways of Giving" in the left-hand column for the many ways you can give to MC!

You will also have the convenience of making gifts electronically with a credit card!

Kay Rankin sets up book scholarship to honor parents

Former MC student and employee, Kay Rankin Williams, recently established the Billy and Coral Rankin Book Scholarship, which is named for her parents. Billy and Coral were longtime residents of Rankin, Texas. Billy was a cowboy—Rankin is named for his grandfather, Finis Ewing Rankin—whose family helped found the town. Coral was a welder whose talents were tested within the narrow confines of the double hulls of the warships she helped construct for Oregon Ship in the 1940s. She was also a very talented carpenter and seamstress. “She could build anything ... she could draw anything,” Kay said of her mother.



Kay Rankin Williams

Kay’s father worked in the oil industry, where he and his employees of W.E. “Billy” Rankin Dirt Contractors dug pits, built roads and laid caliche pads for drilling rigs. He would boast that he had set more Rankin High School boys onto a college path than anyone else in town. After enduring the hardships of hot, dry and dangerous oilfield labor, they dreamed of someday working in an air-conditioned office! He watched many young men go off to college to become doctors, lawyers and teachers and was proud to have been a stop on their path to higher education.

Kay graduated from Midland College in 1994. Her sophomore year she was honored with a *USA Today* Academic All-American Second Team designation! She was also the Career Center Clerk—under now Dean of Student Services, Terry Clemmer—and was instrumental in increasing awareness and support services for disabled individuals. “She was very, very helpful, very knowledgeable ... awfully good about knowing ADA and the Rehabilitation Act of 1973, which we helped introduce to the College back then,” said Terry. After her work in the Career Center, Kay worked for several more years in MC’s Developmental Reading program.

The Billy and Coral Rankin Book Scholarship is reserved for Rankin residents, based upon their financial need, for the purchase of textbooks.



W.E. “Billy” Rankin, shown seated with his wife Coral and historian Paul Patterson, received the Inaugural Early Pioneer Award at the Annual World Championship Barbado Cook-off.

Scholarship established in memory of MC nursing graduate

The Patricia Lechwar Byrd Memorial Scholarship was recently established by Greg Byrd to honor this late wife, Patricia, who was killed last year in an automobile accident. Greg, and his father, Jack Byrd of Byrd Operating, have set up the funds together for MC nursing students with demonstrated financial need and a 3.0 or above GPA.

Patricia earned her Licensed Vocational Nursing (LVN) certification at Midland College in 1983, then went directly to work at Midland Memorial Hospital. “She knew since she was a child that she wanted to be a nurse,” said Greg. “It’s because of Midland College, that she felt so good about her LVN, that she decided to go back and earn her Associate Degree of Nursing.” Becoming an RN allowed Patricia to work in surgery, a unique specialization she had long dreamed of, which became a reality in 1994.



The Lakes and Windscape Apartments establish MC scholarships



Alice Carrera, Property Manager for Windscape Apartments, gives a donation for new scholarship to MC President, Dr. Steve Thomas

The Lakes and Windscape Apartments, Midland apartment communities, each donated a \$6,000 gift to Midland College for scholarships. The total contribution of \$12,000 will provide four students with funding for one year for tuition, fees and books. “We are very excited to make this donation to Midland College and to further enrich the lives of its students,” said Norman Lofthus owner of The Lakes and Windscape Apartments. “Scholarships are an essential component of making education attainable for those who need financial assistance.”

To qualify for the scholarships, applicants must be full-time students with a cumulative grade point average of 3.0 or higher, and demonstrate a need for financial assistance.



Tina Logan, Property Manager for The Lakes Apartments, gives a donation for new scholarship to Dr. Thomas

Scholarships

Friends of the Library Bookstore funds new scholarship for MC students

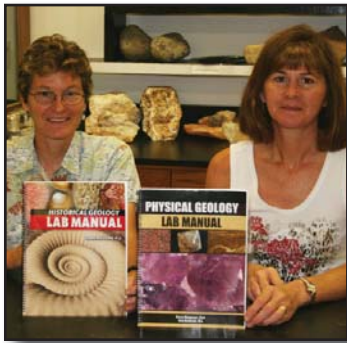
This past May, the Friends of the Library (FOL) Bookstore established a new scholarship to assist MC students with the cost of their textbooks. The FOL Scholarship is designated for Legacy Scholarship recipients with demonstrated financial need. "This way the Legacy pays their tuition and the Friends of the Library Bookstore Scholarship pays for their books!" said past president, Louisa Valencia, who was FOL Board President at the time they established the scholarship.

"We are for literacy ... we felt if we did a scholarship, it would give students the impetus to stay here, and we want as many kids as possible to get educated, especially low income students," said Louisa. Students who receive the FOL Bookstore Scholarship are required to give 40 hours of community service at the Friends of the Library Bookstore, in addition to the 40 hours they do for the Legacy Scholarship.



From left, FOL Board President Ofelia Pallañez, past President Louisa Valencia with FOL student volunteers, James Kim and Henry Phe

Geology instructors write lab manuals, put proceeds toward geology scholarships



Dr. Karen Waggoner and Joan Gawloski with their new geology lab manual

MC Assistant Professor of Geology Dr. Karen Waggoner and Geology Instructor Joan Gawloski have written lab manuals which will be used for their students taking Historical Geology, Physical Geology and Earth Science. The manuals will be selling for approximately \$30 each (much less than the standard \$100 cost), and \$5 from each sale will go toward scholarships for MC geology students. "We are cutting the cost to the student and contributing toward more scholarship funds for our upper level students," said Dr. Waggoner. The instructors have taken a great deal of care in development of these manuals. "We developed lab exercises that we liked and knew were effective ... we will use everything in the book!" continued Dr. Waggoner. The manuals will also contain study of minerals and other geologic specimens native to Texas. "So it will be very user friendly," said Instructor Gawloski.

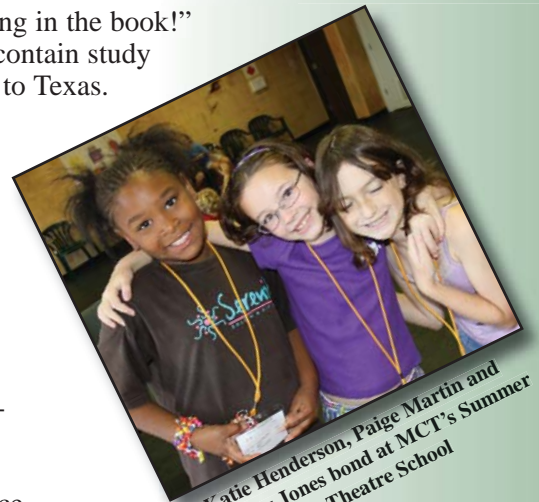
KIDS' COLLEGE scholarships bring elementary children to MC's summer enrichment program

KIDS' COLLEGE (KC) saw record enrollment this past summer! "We have 522 kids right now, and that is a lot of kids!" said Brenda Cordero, Community Programs Continuing Education Director, at the opening of Session I. Last year, for Session I, 414 signed up, which means this year's enrollment increased by over 20 percent! This fabulous, fun and cutting edge curriculum in arts, science and sports, is available to all first through sixth graders.

Many of these children would not have been able to attend this summer enrichment program were it not for KIDS' COLLEGE scholarships. This summer the four KC scholarships enabled 78 children to attend classes, having received \$15,885 in funding by foundations and private donors. The Abell-Hanger Foundation has funded KC classes for 26 children, 13 from Greater Ideal Baptist Church, and 13 from Casa de Amigos. The James A. "Buddy" Davidson Charitable Foundation has enabled 46 children to attend KC classes this first session! Six children received the Buckner-Hearthstone KIDS' COLLEGE Scholarship, which continues to be funded by private donations.



Turtles and frogs and snakes Oh my!



Katie Henderson, Paige Martin and Maddux Jones bond at MCT's Summer Theatre School



The thrill of gymnastics

Dollie Ruth Neal Education Fund provides grant for CNA scholarships

At a ceremony on July 7, the Dollie Ruth Neal Education Fund, a component fund of the Permian Basin Area Foundation, awarded a grant to MC for \$10,000. The money will be used for scholarships for students in the Certified Nursing Assistants (CNA) program. More specifically, the funds are reserved for single mothers, aged 25 or older, and will cover the cost of tuition, fees, book and uniforms for these CNA students. This funding will allow for educational opportunities for women starting at the entry level of a career in the health care industry where demand for workers at all levels is continuously rising. The CNA training program is a unique educational and career opportunity, especially for those who have not earned a high school diploma. "We are so grateful for this funding!" said MC Director of Health Sciences Continuing Education Barry Horseman. "This will provide the funding for seventeen women to successfully complete the Certified Nursing Assistants program ... it gives them a chance for certification and employment in the health care industry that they would not have had before."



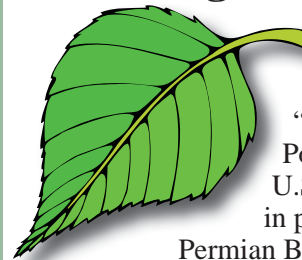
From left: PBAF President Guy McCrary, MC President Dr. Steve Thomas, MC Director of Health Sciences Continuing Education Barry Horseman, PBAF Foundation Grants Committee member Carol Durham and PBAF Board of Governors Secretary and Foundation Grants Committee co-chair Carolyn Stone

College Readiness Intensive Program (CRIP) Grant awarded to MC!

This past June, MC was awarded a \$125,000 College Readiness Intensive Program (CRIP) grant from the Texas Higher Education Coordinating Board that allowed the College to offer an Intensive College Readiness course for GED and high school graduates and adults wishing to go back to college. The FREE 6-week course helped students with their reading, writing, and math skills this past summer. The goal was to help them prepare for the THEA placement exam and college level course-work. In addition to providing academic skills, the course also embedded college readiness topics, career counseling, and help with enrollment and financial aid.

"This grant is off and running!" said Dean of Adult Basic Education Lynda Webb. "The THEA prep class is helping students to enroll into college as well as to place higher than students who do not take the class." The MC campus in Ft. Stockton, the Williams Regional Technical Training Center, will benefit from this grant as well. "We have transferred many of the ideas about targeted instruction to Ft. Stockton, and they have an amazing rate of students getting a GED and enrolling into college," continued Dean Webb.

Pathways out of Poverty Grant awarded to Midland College for training in green jobs



MC was recently awarded a "Pathways out of Poverty" grant from the U.S. Department of Labor in partnership with the Permian Basin Regional Planning Commission (PBRPC). The grant will allow the College to offer short-term career training in the heating and air conditioning industry, with a focus on green and environmentally sustainable pathways. It is especially geared towards individuals who have been laid off, or those seeking a new career. "These Pathways Out of Poverty grants will help workers gain access to the good, safe and prosperous jobs of the 21st century green economy," said U.S. Secretary of Labor Hilda Solis. "Green jobs present tremendous opportunities for people who have the core skills and competencies needed in such well-paying and rapidly growing industries as energy efficiency and renewable energy."

Corporate Matching Gifts


Corporate matching gifts have enabled businesses to double or triple their employees' and retirees' donations to education and other worthy causes. These gifts are an important source of funding for Midland College. For information on gift opportunities,

contact MC Foundation Executive Director,


Eileen Piwetz at (432) 685-4526

or by email at epiwetz@midland.edu

Shell Oil Company Foundation
State Farm Companies Foundation
Friends of the Series 2010
Health Sciences Simulation Center



LEAVE A LEGACY
Make a Difference in the Lives that Follow



Leave an enduring legacy to the Midland College Foundation

Please contact:
Eileen Piwetz, Executive Director
(432) 685-4526
epiwetz@midland.edu

www.midlandcollegefoundation.org

Midland College Foundation Donors

May 19 - August 23, 2010

- Chaparral Center Renovation*
In Honor of
 Gregory Bartha, M.D.
 Peggy & Bob Cowan
- In Memory of:*
 Lewis Corll
 Juan E. Ramos
 Julia & Eric Vickery
- Chaparral Circle Endowment Fund*
 Kay & Don Bishop
 Joseph de Compiegne
 Elizabeth & Dan Leonard
 J. Don Wallace
 Carole Whitten
- In Memory of Rudy Arredondo*
 Cynthia & Art Morales
 Irma Moreno
 Mary Lopez
 Dale Westfall
- In Memory of:*
 Amber Zant Bice
 Peggy Harber
 Dr. Eileen & Jim Piwetz
- In Memory of Bert Bryant*
 Rebecca Bell
 Dr. Eileen & Jim Piwetz
- In Memory of Max Curry*
 Armstrong & Wurster, LLP
- In Memory of*
 Vivian Wristen Eubank
 Terry Clemmer
 Sylvia Gray
 Dr. Pamela Howell
 Cynthia & Art Morales
 Sandra & Dr. Rex C. Peebles
 Dr. Eileen & Jim Piwetz
 Monica Sosa
- In Memory of Mary & Guy Richard Folger*
 Betty & Arlen Edgar
 Pam & Bob Leibrock
 Cynthia & Art Morales
 Dr. Eileen & Jim Piwetz
- In Memory of Kenny Jastrow*
 Linda & Corky Bosworth
- In Memory of Drucila Jimenez*
 Rebecca Bell
 Rita Nell & David Diffie
 Maricela Dominguez
 Norma & Torivio Duran
 Mary Lopez
 Cynthia & Art Morales
 Dr. Eileen & Jim Piwetz
- In Loving Memory of*
 Amy Johnson
 Ann & Ralph Way
- In Memory of*
 Jack Brian Scarbrough
 Pam & Bob Leibrock
- In Memory of Mildred Shapira*
 Billie Ruppe
- In Memory of Glenn Yeary*
 Stacey & Alfredo Chaparro
 Michael Makowsky
 Betsy Seanard
- Court of Honor/Honoraria/Memorial*
 Claudia & Vaughn Donaldson
 Lucretia & Larry Franklin
- In Honor of:*
 Kenadi Jo Barron
 Reed Andrew Gilles
 Nanette & Dennis Sever
- In Memory of Joe Dale Amis*
 Mary Lopez
- In Memory of Ferrel Caster*
 Rita Nell & David Diffie
 Mary Lopez
 Lisa & Mike Stevens
- In Memory of Lewis Corll*
 Dayna & Dale Beikirch
 Rebecca Bell
 Maricela Dominguez
 Sylvia Gray
 Deborah Wolfe & Shep Grinnan
 Linda & Dr. Richard Jolly
 Emma & Percy King
 Josh Knight
 Cynthia & Art Morales
 Dr. Eileen & Jim Piwetz
 Dale Westfall
- In Memory of Chet Hedstrom*
 Mary Lopez
 Ema Rivera
- In Memory of Clifford Nutter*
 Mary Lopez
 Ema Rivera
- In Memory of Guadalupe Paredes*
 Anonymous
 Sylvia & Darrell Brown
 Terry Clemmer
 Emma & Percy King
 Mary Lopez
- Dr. Eileen & Jim Piwetz
 Ema Rivera
 Monica Sosa
 Dale Westfall
- In Memory of Juan E. Ramos*
 Anonymous
 Terry Clemmer
 Rita Nell & David Diffie
 Norma & Torivio Duran
 Dr. Terry & Bruce Gilmour
 Dr. Pamela Howell
 Jan Johnston
 Mary Lopez
 Cynthia & Art Morales
 Sandra & Dr. Rex C. Peebles
 Dr. Eileen & Jim Piwetz
 Jan & Andrew Reed
 Dr. Deana Savage & Glenn Brown
 Lisa & Mike Stevens
- In Memory of Doris O. Tyler*
 Katherine Allen
 Rebecca Bell
 Mary E. Braselton
 Sylvia & Darrell Brown
 Tom Corll
 Rita Nell & David Diffie
 Sylvia Ann Gray
 Dr. Pamela Howell
 Mary Lopez
 Michael Makowsky
 Cynthia & Art Morales
 Dr. Eileen & Jim Piwetz
 Dale Westfall
 Dr. Andrea Zabel
- Davidson Distinguished Lecture Series*
 Warren Administration Company
- Friends of the Series 2010*
 Jan & Roger Artley
 Bennie & Robert Bledsoe
 Paul T. Brown
 D. Davidson Claiborne
 Charlyne Dodge
 Hazel & Marvin Gibson
 Virginia & Bob Jones
 Fred W. Poe
 Donna M. Robertson
 Vera Wecker
- In Honor of Herb Wales*
 Jolene & Joe Don Hancock
- In Memory of Janet McKown Ward*
 Evie & Tom McKown
- Friends of the Series 2011*
 D. Davidson Claiborne
 June Cowden
 Mary & Robert Dyer
- Helen L. Greathouse Children's Center*
 Charles Rogers
- Health Sciences Simulation Center*
 Tim Baker
 Jack Huff
 Tierra Company, L.P.
- In Memory of:*
 Amber Zant Bice
 Bert Bryant
 Peggy Harber
 Ricardo Torres, Jr.
 Dr. Deana Savage & Glenn Brown
- Learning Resource Center*
 Clarine L. Brown Estate
- 2010 Midland Asset Building Awards*
 Community National Bank
- Jerry Mills Faculty Development Fund*
 Ed Penz
- In Honor of Jerry Mills*
In Memory of Doris O. Tyler
 Dr. Terry & Bruce Gilmour
- Programs*
- Art Department**
In Memory of
 Guy Richard Folger
 Linda & Corky Bosworth
- Early College High School**
 RAM Foundation
- Dollye Neal Chapel**
In Memory of Norma Rogers
 Patti & James Groce
- Geology Department**
 Dorothy Nutter
- Jazz Band**
 My Community Federal Credit Union
- Grand Piano Fund**
Fortississimo
 Rea Charitable Trust

Continued on page 12

Scholarships

Dr. Gregory Bartha Health Sciences Scholarship

Jackie Ingram

In Honor of

Gregory Bartha, M.D.

Judy & Hugh Corrigan

Dr. Marshall Box Endowed Scholarship

In Memory of:

Pat Niblett

Ricardo Torres, Jr.

Lucy Box

Cece Brune Scholarship

Cece & A. J. Brune

Dara Perry Bush, R.N., B.S.N. Nursing Scholarship

In Honor of Dru Moss

Jackie Perry

In Honor of Wes Perry

Mary Beth Corbett

Dru, Chris & all the Kids

Jackie Perry

In Honor of

Jackie & Wes Perry

Toni & Larry Kerns & Family

In Honor of:

Bill Watson

Dee Watson

Jackie & Wes Perry

In Memory of:

Jean Pace Asbill

Amber Zant Bice

Bonnie Cain

T. L. Griffin

Lilian Sylvester

Jackie & Wes Perry

Patricia Lechwar Byrd Memorial Scholarship

In Memory of Patricia Sue

Lechwar Byrd

Byrd Operating Company

Candace & Kenneth

Nelson

Dragisic Memorial Scholarship

In Honor of Arthur Dragisic

In Memory of Elsie Dragisic

Anne & Robert Dragisic

L. C. & Wanda Durham

Aviation Maintenance

Technology Scholarship

Wanda & L. C. Durham

Friends of the Library

Bookstore Scholarship

Friends of the Library

General Nursing Scholarship

Dorothy Nutter

Dr. Celia Harris Nursing Scholarship

In Honor of Ethel Trotter

Sandy Davis

In Memory of Jim Huckaby

Marion Axe

Ethel Trotter

David Hoy Harrison Music Scholarship

Estate of Helen G. Harrison

The Lakes Apartments

Scholarship

The Lakes Apartments

Legacy Scholarship

Chaparral Foundation

Barbara Magruder Veterinary Technology Scholarship

In Memory of Allie

Sylvia Ann Gray

Clayton McKinney Law Enforcement Scholarship

Anonymous

Midland Medical Alliance Scholarship

Midland County Medical

Society

Midland Medical Alliance

Dollie Neal Fund CNA Scholarship

Dollie Ruth Neal Education

Fund, a component fund

of Permian Basin Area

Foundation

Billy & Coral Rankin Book Scholarship

Kay Rankin Williams

Scholars' Dollars-2010

Dale Beikirch

Childs Corporation

Fort Stockton Rotary Club

E. H. Huelster

Pecos County Feed &

Supply, Inc.

Pecos County State Bank

Lou Ann & Marcos Tovar

Baltazar Urias

Women's Division of

Chamber of Commerce

Special Scholarship

In Memory of

W. A. "Bill" Seal, Jr.,

Marthann Nobles

Sue Stinson Scholarship

Sue Stinson Charitable Trust

C. Mark and J'Lynn

Newman Wheeler Family

Foundation Scholarship

Dr. Nancy Hart

Windscape Apartments Scholarship

Windscape Apartments

Athletic Programs

Athletic Department

H. Eugene Abbott

Golf Program

Judy & Mark Acklin

J. V. Atkinson

First National Bank

Eddy Ohlenburg

John B. Staub, M.D., P.A.

Volleyball Program

Vernon Harris

A. D. Terrell

Midland College Employees' Payroll Deductions

Numerous members of the Midland College Family have demonstrated their support of the College's programs through monthly payroll deductions for the past sixteen years. The following employees used this method to invest in various funds during the last academic year (September 2009-August 2010).

Athletic Endowment Fund

Dr. Terry Gilmour

Dennis Sever

James Bradford Political

Science Memorial

Scholarship

Dr. Terry Gilmour

Buckner-Hearthstone

KIDS' COLLEGE

Dr. Nancy Hart

Dennis Sever

Chaparral Circle

Endowment Fund/Court of

Honor

Evelyn Barron

Rick Bender

Maricela Dominguez

Norma Duran

Kay Floyd

Sonia Ford

Alma Guyse

Karen Harris

Dr. Nancy Hart

Dr. Stan Jacobs

Dr. Richard Jolly

Mary Lopez

Sammy Martinez

Cynthia Morales

Dr. Will Morris

Bob Peetz

Helen Peetz

Ken Riley

Dr. Andree Rosen

Dennis Sever

Monica Sosa

Mike Stevens

Rita Stotts

Brenda Tipton

J. Don Wallace

Dale Westfall

Chaparral Center

Renovation

Ema Rivera

Phyllis & Bob Cowan

Performing Arts Series &

Davidson Distinguished

Lecture Series

Sonia Ford

Fox Science Building

Elizabeth Brown

Judy Jordan

Dennis Sever

J. Don Wallace

Friends of the Series

Dr. Terry Gilmour

Dr. Richard Jolly

Dr. Deana Savage

Mike Schneider

Health Sciences Simulation

Center

Bill Heathman

Ema Rivera

Clara King Accounting

Scholarship

Dale Westfall

Frances & Lee Morris

ABE General Education

Development Scholarship

Dr. Nancy Hart

Dr. Will Morris

Clayton McKinney Law

Enforcement Scholarship

Bob Peetz