

Fall 2009



Clarion
Clarion
Clarion

3600 N. Garfield

Midland, Texas 79705

(432) 685-4526 www.midlandcollegefoundation.org

MIDLAND COLLEGE

FOUNDATION

MC Biology Department acquires DNA Analysis system through LI-COR Bioscience Corporation and MC Foundation Grants

MC is serious about science!

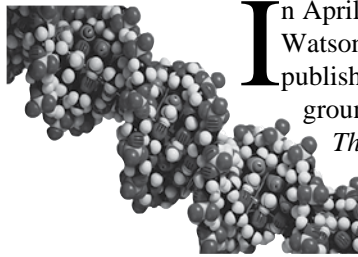
Renowned scientists E.O. Wilson, Michael Economides and Steven Pinker come to MC



LI-COR and MC Foundation grants provide for DNA Analysis System



MDC grant to launch Wind Energy Workforce Training Program



In April of 1953 James Watson and Francis Crick published the brief, but groundbreaking article, *The Molecular Structure of Nucleic Acids: A Structure for Deoxyribose*

Nucleic Acid in the scientific journal *Nature*. It was the first publication which described the discovery of the double helix structure of DNA, a discovery which had a major impact on genetics in particular and biology in general. Since then, Mr. Watson has had his entire genome sequenced: it is over three billion nucleotide bases long.

The new 4300 DNA Analysis System at Midland College does not require nearly as many base pairs for assessment. In Dr. Paul Mangum's general biology class, his students will be able to gather a sample of cheek cells and cull a strand of approximately 250 base-pairs to be analyzed by the new technology. "This technology has important diagnostic uses in pharmacogenomics," Dr. Mangum said. "Medicine will become much more personalized," he continued. Ninety-nine percent of the DNA sequence for humans is identical. "We are looking for particular markers, certain sequences that make an individual or a population unique," he said. These unique sequences help scientists predict disease in populations and determine the most effective treatments.

Now in his 15th year at MC, Paul Mangum's work continues to put the college at the cutting edge of science, most recently as grant writer for the \$102,898 necessary to purchase the DNA Analyzer. The LI-COR Bioscience Corporation, through their Genomics Education Matching Fund program, awarded a \$61,739 grant which was matched by \$41,159 from the Midland College Foundation. "The Midland College Foundation was delighted to participate in the funding for the Genomics Education program. Monies were provided by the Chaparral Circle Endowment Fund, which was established in 1993 to allow Midland College to be one of the premier community colleges in our nation," said MC Foundation Executive Director Dr. Eileen Piwetz. "The Foundation's investment in state-of-the-art biotechnology equipment allows our academically strong biology department to be a leader in undergraduate education by providing unique learning experiences for our students who will successfully transfer to universities of their choice," Dr. Piwetz continued.

Many other MC staff and faculty are excited about this new technology. Biology Instructor Dr. Miranda Poage—whose area of expertise is genetics—used a DNA Analyzer in her past research with DNA cloning. "Access to a sequencer allows us to isolate a specific gene and know that we've identified it correctly. We can introduce our students to Genomics, one of the foremost types of research in the field," Dr. Poage said. "Now we can look and see how organisms are related in the most fundamental ways. It's opening up a whole new world for our students ... we are able to give them hands-on experience they might not otherwise have access to until much later in their careers," she added.



The "gene machine dream team," standing, from left, MC Biology Instructors Marlana Mertens and Dr. Paul Mangum, LI-COR Field Applications Scientist Charlie Troxel, MC Biology Instructor Tomas Hernandez; seated, Sul Ross Microbiology Lab Manager Karen Little, MC Biology Instructors Dr. Miranda Poage and Ethel Matthews

Midland College

Foundation Board

Officers

President

Richard T. McMillan, Esq.

Vice President

Glenn Rogers, D.D.S.

Secretary

William D. Kleine

Directors

Gregory Bartha, M.D.

Spencer Beal

Mike Black

Jack E. Brown

Arnulfo T. Carrasco, M.D.

Linda Cowden

L. Decker Dawson

H. Joseph de Compiegne

Joann E. Foster

Marie Hall

Tevis Herd, Esq.

Cadell Liedtke

William Marshall

T.B. O'Brien

Mrs. Donald O'Shaughnessy

Beverly Pevehouse

Clarence Scharbauer III

Charles Spence

Steve Thomas, Ph.D.

Carole Warren

Ralph L. Way

Terry Wilkinson

Staff

Executive Director

Eileen Piwetz, Ed.D.

Administrative Assistant

Cynthia Morales

Secretary

Maricela Dominguez

Clarion Editor

Nancy Thorne

Art Director

Chip McCarver

Photographers

Katherine Inskeep

J. Don Wallace



The Midland College

Foundation

may be contacted at:

(432) 685-4526

(432) 685-4714 (Fax)

epiwetz@midland.edu

Dr. Steve Thomas celebrates one year as MC President



In the Spring 2009 edition of the *Clarion*, I spoke of the promise of the “open door” as the guiding principle of our comprehensive mission. In my first year as President, I am pleased to report that the promise of the “open door” is not a theoretical concept, but a call to action. There are numerous examples of how MC is providing access and opportunity for students. As a result of the \$41.8 million bond that was passed in 2005, college facilities have been greatly expanded with the completion of the F. Marie Hall Academic Building, the Helen L. Greathouse Children’s Center and the expansion of the Fox Science Building. Renovation of the Scharbauer Student Center and the Physical Education Building are nearing completion and, all totaled, this will add 151,885 square feet of new space to serve students. And, what beautiful space it is! The Midland College campus continues to be an oasis in the Permian Basin. In addition to the bond projects, renovation of the Al G. Langford Chaparral Center is nearly complete, which will make this a first class venue for a variety of events—from sports to entertainment—serving the entire community.

Just as our outstanding facilities are an indication of MC’s commitment to serving students, there are a number of exciting new programs and services that create even more options for students. New programs in Energy Technology and Chemical Technology provide students career options in emerging fields. The Health Sciences Simulation Center is still on the drawing board but, when completed, will provide a state-of-the-art training facility for nurses and other health science professionals in partnership with Midland Memorial Hospital and Texas Tech University Health Sciences Center. MC is proactively developing distance education as more and more students are enrolling in Internet classes, and faculty are working hard to ensure that quality is paramount in all of our programs of study. These are but a few examples of the “open door” at work.

Where else can a student enroll to study to become a nurse or physician, a veterinary technician or veterinarian, a chemistry technician or researcher, a law enforcement officer or lawyer, an English teacher or writer, a sociologist, a psychologist, an automotive or aviation technician, a pilot? The list goes on because MC offers over 100 certificates and associate degrees in career and technical programs, and undergraduate courses leading to baccalaureate and advanced degrees—all with one goal in mind, student success. Where else but Midland College!

The Yucca Garden Club continues tradition of giving to MC

Founded in 1947, the Yucca Garden Club has been a union of dedicated gardeners who have enjoyed promoting their mission throughout the community ever since. They have also been very generous supporters of Midland College, donating the proceeds of their fundraising efforts repeatedly throughout the years. Most recently, they gave \$5,000 to the General Scholarship Fund, the entire amount of a CD they invested back in 1992. “We know what’s going on at the college and we know it’s a worthwhile venture to invest in MC,” said club secretary Mary Crosby. “We couldn’t think of a better place to put our money!” she added.



From left, Yucca Garden Club President Jo Curtis, Secretary Billye Faye Neuhardt, Second Vice President Anna Mae Jones and Treasurer Mary Crosby

They have been a very active civic club since their organization and, even though many of their members have passed on, the Yucca Garden Club of Midland continues in fellowship and friendship! Current members include: Mary Crosby, Jo Curtis, Nancy McNerney, Anna Mae Jones, Billye Neuhardt, Virginia Menusos, Roberta Bain, Mickey Hewitt, Carol Hughes, Betty Jones and associate member Katrena Cain.



GISP students at the Cogdell Learning Center

MC awarded \$27,500 grant from Texas Higher Education Coordinating Board for GED program

Midland College recently received a \$27,500 grant from the Texas Higher Education Coordinating Board (THECB) for a GED Intensive Summer Program (GISP) to assist eligible students in passing the THEA college entrance exam, and becoming academically prepared for college. Historically, there has been a large gap for many students between earning their GED and becoming successful college students. Even though they have passed the GED, they are not prepared for the academic rigors, nor comfortable with the language and culture of college, and often must take developmental courses to make the transition. “One in seven students that attends a community college is a GED student. By and large, they are not very successful ... with this grant we hope to start changing that,” said GISP director and MC Dean of Adult Basic Education Lynda Webb.

A huge commitment has been made by Midland College to Adult Basic Education (ABE) and MC is one of only 13 colleges in Texas who were accepted into this grant program. MC is also the only community college in Texas to fund ABE director and secretary positions on campus (instead of paying their salaries with grant funds). All of the GED and English as a Second Language courses are offered free through MC’s ABE program, which also includes the largest distance learning program in the state of Texas. “We are dedicated to learning ‘who is that person sitting in the seat?’ and walking them through whatever steps are necessary, so that they can become successful in college,” Webb added.



From left, Midland Mayor Wes Perry, Midland College President Dr. Steve Thomas, President of the Midland Development Corporation Board of Directors Doug Henson, and Vice President of the Midland Development Corporation Mike Hatley

MDC grant launches Wind Energy continuing education training program

On July 31, the Midland Development Corporation (MDC) approved funding in the amount of \$20,000 to Midland College for a new Wind Energy Workforce training program. “We’re excited to be offering this new opportunity to those looking for re-training, or those individuals seeking entry into new industries,” said MC Workforce Continuing Education Program Director Lyndolyn Pervier. “This is also a terrific resource for businesses seeking expansion of their energy into renewable options,” she continued.

The courses, which will be approximately two-four weeks in duration, will begin this September at MC’s Advanced Technology Center, and held on a recurring basis through December of 2011.

Renewable energy industries continue to grow in the Permian Basin and the MDC and Midland College recognize the need for quality training for individuals seeking jobs in the renewable energy field. MC already has a new Energy Technology Program, also beginning this Fall 2009, with a wind energy component. However, several wind energy companies have expressed the need for workers in a shorter time frame than the two years required for students to complete their associate degrees. This prompted Midland College to develop curriculum for these shorter, “boot camp” courses to assist in supplying the needed workforce to the wind energy industry.

“Energy-related industries are one of the MDC’s targeted industries, and a trained workforce for the renewable energy sector is vital to sustain and attract this industry to the Permian Basin and Midland,” said MDC Board President Doug Henson.



Steven Pinker

Author and One of the World’s Leading Cognitive Scientists
Speaking on: “The Stuff of Thought: Language as a Window into Human Nature”
7:30 p.m., Thursday, April 22, 2010
Al G. Langford Chaparral Center

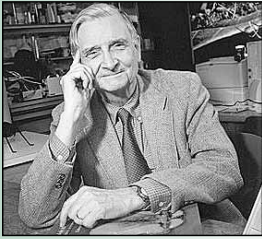
Coming in Spring 2010!
from the Davidson
Distinguished Lecture Series

Steven Pinker asks audacious questions about the human mind -- then boldly sets out to answer them. Recently named one of *TIME* magazine’s “100 Most Influential People in The World,” he is enormously popular in the media and highly respected in scientific circles. Known for his verve, wit and profound ideas—many explained by referencing pop culture—Pinker is a brilliant speaker who helps non-specialists understand the science behind human thought and action.

One of the world’s leading cognitive scientists, his books include the best-sellers *The Blank Slate* and *How The Mind*

Works, both finalists for the Pulitzer Prize. His acclaimed “language” series includes *The Language Instinct* and his most recent, *The Stuff of Thought: Language as a Window into Human Nature*.

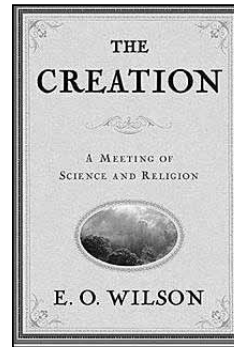
Pinker is the Johnstone Professor of Psychology at Harvard and has also taught at Stanford and, for 21 years, at MIT. He is a fellow of the American Academy of Arts and Sciences and the American Association for the Advancement of Science, has won a number of teaching prizes, and was named among *Newsweek* magazine’s “100 Americans for the Next Century.”



Dr. E.O. Wilson

Pulitzer Prize-winning Scientist & Naturalist
 "The Creation: An Appeal to Save Life on Earth"

Thursday, September 17, 2009, 7:30 p.m.
 Al G. Langford Chaparral Center



"He has done so much for biology ... he is a modern-day Darwin."

MC Biology Instructor
 Tomas Hernandez

Eminent scientist and naturalist E.O. Wilson comes to Midland College!

In his recent book, *The Creation*, Edward O. Wilson tries to bridge the divide between religion and science in an urgent plea for the union of all mankind in protecting the diversity of plant and animal species. Their extinction spells our own ultimate demise.

Having recently celebrated his 80th birthday, E.O. Wilson began his illustrious career as naturalist, biologist, eminent scientist, and Pulitzer Prize-winning author at nine years of age, when he began, much like Darwin, his field excursions into Rock Creek Park near his home in Washington D.C. His fascination with insect species and societies—which he collected, identified and studied on a grand scale—had him intent on becoming an entomologist by 18. Sixty-two years later, his work has earned him a reputation as one of the greatest scientific minds of the 20th century. "He is a living Darwin, a modern-day Darwin," said MC Professor of Biology Tomas Hernandez. "His contributions to biology are absolutely enormous," Mr. Hernandez continued.

One of the biggest obstacles to conservation efforts

has been the division between science and religion, a conflict centered around the theory of evolution. Wilson would much rather move beyond that debate to address a much more urgent matter: "I suggest that we set aside our differences in order to save the Creation. The defense of living Nature is a universal value. It doesn't rise from, nor does it promote, any religious or ideological dogma. Rather, it serves without discrimination the interests of all humanity."

"If religion and science could be united on the common ground of biological conservation, the problem would soon be solved. If there is any moral precept shared by people of all beliefs, it is that we owe ourselves and future generations a beautiful, rich, and healthful environment," Wilson continued.

Tomas Hernandez settles the argument in a similar way: "If God has given us this world as a gift, shouldn't we all come together to protect this gift?" "I'm really excited about Wilson ... he's going to be amazing!" Tomas added.

Michael Economides comes to MC for free lecture!

Dr. Michael J. Economides is a chemical and petroleum engineer and an expert on energy geopolitics. Technically, he casts a commanding figure in petroleum and natural gas reservoir and production engineering. With 14 textbooks and over 200 journal papers and articles, his works are referenced by almost all practitioners in the field. Following his 2000 best seller *The Color of Oil* and a large number of publications in international magazines, he is considered by many as the premier world expert on the geopolitics of energy, giving about 50 speeches per year to groups from many large professional societies, organizations and corporations. He is a frequent guest on national and international media, appearing on CNBC, Fox News, A(Australian)BC, Tokyo Channel 13, Dow Jones Wire, NPR, Bloomberg, BBC World Service and many local stations throughout the world. He writes for the editorial pages of major newspapers and Internet

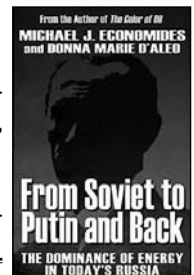
The Permian Basin Petroleum Association, and H. L. Brown Operating and Kennedy Minerals, Ltd. with Ernest Angelo, Concho Resources, Inc., Hal S. Dean, Arlen Edgar, Kirk Edwards, Arden Grover, Paula and Jim Henry, and William S. Marshall present:



Dr. Michael Economides

Chemical and Petroleum Engineer,
 Professor and Author
 "Energy Geopolitics"

Thursday, October 8, 2009, 7:30 p.m.
 Al G. Langford Chaparral Center



news organizations. His latest wide-appeal book is *From Soviet to Putin and Back: The Dominance of Energy in Today's Russia*.

PHYLLIS & BOB COWAN

performing arts series

The StepCrew

New Celtic-inspired Dance Production
Thursday, October 22, 2009, 7:00 p.m.
Al G. Langford Chaparral Center

The StepCrew is the new international dance production featuring the world's top talents in Irish Step, Ottawa Valley and Modern Tap Dancing, as well as fiddling. The StepCrew takes traditional dance forms and fiddling to new heights.

Featuring a cast of seven outstanding dancers, The

StepCrew seamlessly transitions through traditional classics, modern interpretations of Celtic dances and electrifying new compositions created for their debut tour of this exciting show. The 12-member troupe also includes a female vocalist and a four-piece band featuring some of the leading musicians on the scene today.

Returning in Spring 2010!

Marvin Hamlisch

Pianist and

Academy Award-Winning Composer

Tuesday, March 30, 2010, 7:00 p.m.

Al G. Langford Chaparral Center



Marvin Hamlisch made the inaugural performance in the Phyllis & Bob Cowan Performing Arts Series in September of 2000. Now, in honor of the ten-year anniversary of this outstanding series, Mr. Hamlisch returns in Spring of 2010!

As a composer, Hamlisch has won virtually every major award that exists: three Oscars, four Grammys, four Emmys, a Tony and three Golden Globe awards. His groundbreaking show, *A Chorus Line*, received the Pulitzer Prize.

He is the composer of more than forty motion picture scores including his Oscar-winning score and song for *The Way We Were* and his adaptation of Scott Joplin's music for *The Sting*, for which he re-

ceived a third Oscar. His prolific output of scores for films include original compositions and/or musical adaptations for *Sophie's Choice*, *Ordinary People*, *The Swimmer*, *Three Men and a Baby*, *Ice Castles*, *Take the Money and Run*, *Bananas* and *Save the Tiger*.

His latest effort is *The Informant*, starring Matt Damon, directed by Steven Soderbergh, scheduled for release this September 2009.

Marvin Hamlisch holds the position of principal pops conductor for the National Symphony Orchestra, Pittsburgh Symphony Orchestra, Colorado Symphony Orchestra, Milwaukee Symphony Orchestra, Seattle Symphony and San Diego Symphony.

All events in the Lecture Series and the Performing Arts Series are FREE and open to the public. For more information, please call (432) 685-4526, or see us online at www.midlandcollegefoundation.org

**Become a
 Friend of the Series!**

Friends of the Series was established to supplement the Phyllis & Bob Cowan Performing Arts Series and the Davidson Distinguished Lecture Series. *Friends of the Series* still needs your support and a gift of \$1,000 for 2009 will include you in this membership, which comes with terrific fringe benefits. As a *Friend*, you will enjoy preferred parking and seating at events, a listing in the programs and an invitation to event receptions. At each reception, you will have an opportunity to meet the artists and lecturers who have come from around the world to grace our Midland stage!

In Memory of ...

Longtime MC government and history instructor Charles Edward Phillip Simmons passed away on August 4. Dr. Simmons was born in Boston in 1931 to Charles Leonard Simmons and Constance Isabel Simmons. He joined the Army at 17, trained as a medical technician and served, first in Japan, then Korea at a MASH hospital until his return to the States in 1953. He received his bachelor's degree from Seattle University in 1960, as well as a master's from Drake University the same year. He earned his Ph.D. in South American Religion in 1965 from Washington State University, did post doctoral studies at Dalhousie in Canada, and then began a long and distinguished career in academia. He served as a Professor of History at The University of Idaho, the History Department Chair at Bradley, Dean of the Faculty at the University of Minnesota, Vice President at Evansville University, and President of Lake Erie College in Ohio.

Beginning in 1985, and continuing until his retirement in 1997, he taught at MC, where he proved to his students that learning history could be fun. As testimony to the

Charles Simmons



excellence of his teaching, he received the Best Professor award at Midland College and was named a Minnie Piper Stevens recipient as one of the finest college Professors in Texas. Charles was active in the fundraising efforts of the Midland College Foundation, specifically the Chaparral Circle Endowment Fund. In 1988, he was named a Kellogg Foundation Fellow and through that group became a mentor for aspiring young academicians. Charles married Margaret Lawrence Bowers in 1985 and together they pursued their common loves of family, friends, cooking, and traveling.

In Midland, Charles served on the Board of Casa de Amigos for many years, volunteered at the Soup Kitchen, the Midland Hospice, substituted at Meals on Wheels, and was a faithful member of The Episcopal Church of the Holy Trinity, where he was a Layreader. He is survived by his wife and seven children. Memorial gifts may be made to the Simmons Scholarship Fund at Midland College, 3600 North Garfield, Midland, Texas, 79705.

Chaparral Circle Endowment Fund

In Memory of Dr. Charles Simmons

- Sylvia & Darrell Brown
- Bahola & Tim Edwards
- Cynthia & Art Morales
- Doris Muehlbrad
- Helen & Bob Peetz
- Dr. Eileen & Jim Piwetz
- Andrew & Jan Reed
- Warren Taylor
- Dale Westfall

Charles and Margaret Simmons Endowed Scholarship Fund

In Memory of Dr. Charles Simmons

- Joan Baskin
- Karen & Spencer Beal
- Mr. & Mrs. A.R. Bohannon, Jr.
- Donna & Thomas Bohn
- Joan & Lester Brune
- Dee Dee & Dr. David Daniel
- Rebecca & Robert Dean
- Rita Nell & David Diffie
- William G. Fleischmann
- Dr. Jerry Franks
- Dr. Betty & Bob Gaines
- Dr. Terry & Bruce Gilmour

- Dr. Larry D. Griffin
- Bill Kleine
- Barbara & Jim Leeton
- Melissa & Greg McCabe
- Ruth Orson
- Norma & Dr. Jess Parrish
- Vina Rahlfs
- Ema Rivera
- Reverend Josie Rose
- Cheryl & Mack Sellars
- Vicki & Dr. Steve Thomas
- H.A. Tuck
- J. Don Wallace
- Carole Whitten

In Memory of ...

B Lee Dorn died at home after a long illness on Wednesday, July 1. She was 83 years old. The only child of Leslie and Blanche Stringer, Mrs. Dorn was born in Wichita Falls on November 28, 1926. Following her high school years at Hockaday, she attended two years of Chevy Chase College in Washington, and then returned to Texas, to attend the University of Texas at Austin, from which she graduated in 1949. Later that year, she married John Dorn, and they moved to Midland. They had four children, in roughly three year intervals: first, their daugh-

B Lee Dorn



ter Rebecca, followed by three sons: Leslie, Stephen and Timothy. A true Renaissance woman, she was as avid a reader as she was an athlete, as content at a Broadway show as she was in the streams of Vermejo. B Lee was also instrumental in the founding of the Museum of the Southwest. The family has requested that contributions be made to Midland College, 3600 N. Garfield, Midland, Texas, 79705.

Chaparral Circle Endowment Fund

In Memory of B Lee Dorn

- Mr. & Mrs. R.C. Banks
- Basin Aviation
- Joan Baskin
- Myrna Canady
- H.B. Hause
- Mr. & Mrs. William F. Higie

- Roberta Hoy & Bob Postle
- Patti & Watson LaForce
- Dan McNamara
- Paula Meissner
- Smith, Best & Stoneking, P.C.
- Sarah Hause Steves
- Catherine Walne
- Harriett B. Wick

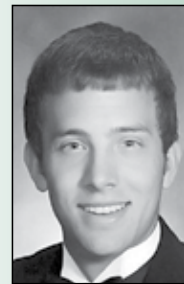
Glendorn Foundation Scholarship

In Memory of B Lee Dorn

- Patty & Bill Lawson

In Memory of ...

Byron Chew



Byron Paul Chew, 19, of Amarillo, died Saturday, June 20, 2009. Byron was born May 14, 1990 to Barry and Steffanie Chew. He attended Carver Elementary, Westover Middle School and Tascosa High School, where he was a member of the Tascosa baseball team and National Honor Society.

He received a scholarship to play baseball at Midland College, where he spent his freshman year. Byron was a son, brother, cousin, teammate, friend, hunter, fisherman and avid baseball player. He was big brother, "Bub," to Duncan who grew up watching Byron play baseball and learned to love the sport himself.

Byron spent his high school and college years playing ball and also played one summer with the Blacksox, a summer baseball program in Burkburnett. But Byron's love for baseball didn't overshadow his other interests in life. He was a golf buddy to his grandparents, and was always ready to go hunting or fishing with anyone who would go with him. Byron's love of animals, large and small, led him to aspire to be a veterinarian.

His gentle ways would have proven to serve him well in that endeavor. Perhaps Byron will be most remembered by his awesome sense of humor and his wide grin. He was a respectful and sometimes quiet young man, but could laugh and joke with the best of them.

His quick wit was a source of entertainment to those around him. Byron was a permanent figure throughout his years at Carver Elementary School, where his mother is principal. He was always ready to lend a hand hauling books, cutting up the brisket for the faculty picnic, or helping kids shop at Santa's Shop. He will be greatly missed by the staff at Carver.

Survivors include his parents, Barry and Steffanie Chew of Amarillo; a brother, Duncan Chew, of Amarillo; his grandparents, Paul and Claudia Dick from Dewey, Oklahoma, and Lee and Mary Chew from Ramona, Oklahoma.

<p>Court of Honor <i>In Memory of Byron Chew</i> The Midland College Family</p>	<p>Vickie & Stanley Capron Beverly & Stan Chatman Lizzy Chestnut Virginia & Carol Chew Terri & David Coleman Lillian Crisp Linda & Kenneth Cunningham Kris & Michael David Terri & Richard Davis Joy & Jerry De Sha Sharyn & John Delgado Claudia & Paul Dick Mary & Donald Dick Rita Nell & David Diffie Terri & Russell Downs & Family Tammy & Robert Elliott Brenda Beeler Epperson Family Medicine Centers, L.P. Laura Ford Melanie & Jim Friemel Christine & Steve Hall</p>	<p>Stacey & Trevor B. Hall Lara & Clarence Heronemus Suzy & Marion Hicks Donna & Kevin Hill Leona & Bill Hogue Randy, Carla & Ryan Hunter Shirley & Ron Huntington Shannon & Michael Jackson Jan Johnston Billie & Bruce Kilpatrick Marianne & Jerry Kirkland Effie & Claude Lenard Liz & Jay Lockman Lori & Ernie McBrayer Mendy & Roy McGregor Marty Mock Ruby & Ron Mounce Annette & Frank Ortega Palo Duro Cluster Administrators, Amarillo Independent School District</p>	<p>Jan Reed Woodward Father's Day Weekend Golfing Friends Hector J. Rodriguez II Loretta Rowell Lisa & Mike Stevens Shirley Stewart Tascosa Cluster, Amarillo Independent School District Jeannie Thomas Shirley Thomas Mark A. Thompson Ann & Ronald Walker Jim Wayne George Welp B.H. & J.R. Whitney Carol A. Wipf</p>
<p>Baseball Program <i>In Memory of Byron Chew</i> Sandi Bagley The Clint Baker Family Janice & Jim Beeler Jacqueline & Barney Beesley Glenda & Bill Behrens Todd Benton Terena Boyer Rita Brady Donna & Richard Byrd & Boys Kristi & Chris Cabbiness Caprock Cluster Administrators, Amarillo Independent School District</p>			

Take the Next Step ...

log onto our Website at

www.midlandcollegefoundation.org

to discover how your

support of our mission can change lives.

*Click on "Ways of Giving" in the
 left-hand column for the many ways*

you can give to MC!

*You will also have the convenience of making
 gifts electronically with a credit card!*



McCormick Gallery's Studio 3600 exhibit to feature work of longtime MC students

The first Studio 3600 exhibit was held in August of 2006 to spotlight the work of selected MC students in McCormick Gallery. The series allows artists to exhibit key works that identify the style they have crafted over a period of time. This September, Studio 3600 will feature the ceramics of Jesse Trejo and the watercolors of Janet Haney.

Studio 3600

*Featuring the ceramics of Jesse Trejo
and
the watercolors of Janet Haney*

McCormick Gallery, Allison Fine Arts Building
Exhibit runs from August 27 through October 2



Top, Jesse Trejo's
Campana teapot; above,
"Ode to Van Gogh"
by Janet Haney

MC Speakers' Bureau provides FREE presentations to community



For years, Midland College has sustained its impressive legacy through a continued relationship with our community. Our goal is to continue to grow that relationship by inviting you to take advantage of the Midland College Speakers' Bureau! This is a wonderful resource for civic, non-profit, educational, and service organizations in the city of Midland. Respected speakers from diverse fields are available to deliver presentations on a variety of topics, ranging from Midland College programs and events to adventures in Africa! Please see box

below for past speakers and their presentation topics.

More than ever before, members of our community seek programs of substance offering real learning opportunities. The MC Speakers' Bureau is an excellent and easy way to provide just such opportunities for your audience. Presentations are FREE and meant to encourage further discussion among audience members in order to provide both an entertaining and educational experience.

To book a speaker, please call Melissa Mudge at (432) 686-4227 or email her at mmudge@midland.edu. For further information about the MC Speakers' Bureau visit us online at www.midland.edu/speakers.

Speakers' Topics from the experts at MC!

- MC President Dr. Steve Thomas is an expert on community college education and leadership. He has done numerous talks in the past on his vision for the college, MC programs, and updates regarding bond construction, curriculum, accountability and technology.
- Vice President of Institutional Advancement Dr. Eileen Piwetz has traveled extensively throughout Africa, Asia and Europe and made presentations such as, "A Photographic African Safari," and the "Himalayan Kingdom Revealed;" she is also available to speak on fundraising, grantwriting and corporate partnerships.
- MC Professor of Biology Tomas Hernandez is an expert in botany and has led numerous field trips to Big Bend National park for field excursions and plant collections.
- Associate Vice President of Instruction-Transfer Dr. Stan Jacobs has presented travelogues of his many art and archeology study trips, mission trips and pleasure trips to Moscow, Bulgaria, Slovakia, Italy, Honduras, Guatemala and Peru.
- Dean of Math and Science Dr. Margaret Wade is an expert in Environmental Biology and the biology and culture of Central and South America, having traveled and hosted numerous study trips to Peru, Guatemala and Mexico.
- Professor of Government Dr. Terry Gilmour is available to speak on political and social issues, such as Women in Politics, Gender Differences/Gender Stereotypes and The Constitution.
- Professor of History Dr. Damon Kennedy has spoken on Texas History, Texas Ranching, the American West and Banking in Texas.
- Director of Athletics Forrest Allen is available to speak on Leadership, Athletics and Team Building.



Make-a-Wish recipient Krystle Hawkes

MC Automotive students refurbish car for Make-A-Wish recipient

On the evening of May 26, Make-a-Wish Foundation wish-recipient Krystle Hawkes was granted her wish for the “muscle car of her dreams” by MC Automotive students and their instructor Ted Sumners, Professor and Faculty Director of MC’s Automotive Technology program.

From August 2008 until May of 2009, eighteen students worked tirelessly to restore the 1968 Chevelle Malibu to its shining Lemans blue exterior, with white racing stripes down the front and back. Under Professor Sumners’ guidance and the direction of Project Manager Billy Davis, the students worked in four “teams” focused on the following areas: 1) paint/body; 2) interior/upholstery; 3) engine; and 4) brakes and chassis. All told, they detailed the engine, aligned the brakes and chassis, installed new, specially embroidered upholstery and repainted the exterior of the car.

The new car is not the only sign of hope in Krystle’s life. She graduated from Crane High School in May and will be attending Midland College this fall where she plans on studying radiography. As wishgranter David Stall said, “at Make-A-Wish we make wishes happen. At Midland College, they make miracles happen!”

“At Midland College they make miracles happen!”

The IRA Charitable Rollover

For 2009, individuals who are age 70½ and older can transfer up to \$100,000 from an Individual Retirement Account (IRA) to the Midland College Foundation—without incurring federal income taxes today, or state and income taxes in the future. The IRA gift amount is treated the same as a cash distribution for purposes of satisfying required minimum distribution (RMD). Each spouse can transfer up to \$100,000. Consult your financial advisor for details.



From left, Dean of Public Information Chip McCarver, Public Relations Director Nancy Thorne and Director of Media Services J. Don Wallace

MC’s Public Information staff enjoys team effort in publishing the *Clarion*

Publication of the *Clarion* is a group effort, combining the over-40 years of experience brought to the effort by Dean of Public Information Chip McCarver, Public Relations Director Nancy Thorne and Director of Media Services J. Don Wallace. Coming on board in 2001, Chip McCarver brings over 15 years of experience in publishing with the *Midland Reporter-Telegram* to Midland College, which he puts to good use as the *Clarion* Art Director. *Clarion* Editor Nancy Thorne has 15 years experience in marketing and public relations, the lion’s share of which was spent with Barnes & Noble Booksellers in New York and California. J. Don Wallace’s tireless dedication to Midland College began in 1997. Since then, he and his staff have taken pictures for the *Clarion*, while J. Don also serves as Director of

McCormick Gallery, the Dollye Neal Chapel and Curator for MC’s ever-growing permanent collection of art.

Each quarter the Public Information team enjoys covering the many awe-inspiring moments in which donors contribute so generously to Midland College, making it one of the premier community colleges in the nation! Their work on this publication is a labor which reaps many rewards, as it is proven, again and again, how generosity changes the lives of MC students for the better, and enriches our community in immeasurable ways.



LEAVE A LEGACY®
Make a Difference in the Lives that Follow



Leave an enduring legacy to the Midland College Foundation

Please contact:
Eileen Piwetz, Executive Director
(432) 685-4526
epiwetz@midland.edu

www.midlandcollegefoundation.org

Midland College Foundation Donors

May 14 - August 25, 2009

Chaparral Circle Endowment Fund

Carole Whitten

In Honor of:

Mell Bullock
Honorable Robert A. Junnell's
Correctional Program
Tulsi D. Singh, M.D.
Terry D. Tubb, M.D.

In Memory of O.B. Orr

Terry D. Tubb, M.D.

In Memory of

Betty Lou Williams Beumeler
Cynthia & Art Morales
Helen & Bob Peetz
Dr. Eileen & Jim Piwetz

In Memory of Terre Cowden

Vicki & Dr. Steve Thomas

In Memory of Bruce Fagan

Dora J. & Bill Wohlfeld

In Memory of Becky Huff

Wanda Campbell
Doris Muehlbrad

In Memory of:

Joan Moore
Virginia Carper Storm
Dr. Eileen & Jim Piwetz

Cosdell Learning Center Fall Fair

Stewart Title Midland Division

Court of Honor/Honoraria/ Memorial

In Honor of:

Nathan Layne Alberts
Isabella Jade Lopez-Barron
Sadie Christine Gonzales
Brycen Ezekiel Hearn
Javian Chayse Mitchell

Maddison Kay Phillips
Kayden LaTrey Smith
Nanette & Dennis Sever

In Honor of:

Gwen & Jerry Delk
Brennon Fikes
Jenny & Perry Fikes
Keggan Fikes
Torry Fikes
Lou Mays
Shirley A. Mays

In Honor of:

Ashley Elizabeth Freeman
Winter Violette Freeman
Earl Freeman

In Honor of Diego Jones

Katherine Allen
Billy Feeler
Dr. Pamela Howell
Michael Jordan
Lula Lee
Duberlinda Mauricio
Warren Taylor
Bob Templeton
Tyler Tindall
Rebecca Watson

In Honor of:

Ray C. Irving
John Underwood
The Insurance Man &
Associates

In Memory of Paula Alvarado

Rebecca Bell
Sylvia & Darrell Brown
Bahola & Tim Edwards
Dr. Pamela Howell
Adriana & Sammy Jaso
Mary Lopez
Chris & Chip McCarver
Cynthia & Art Morales
Dr. Eileen & Jim Piwetz

In Memory of Rena Bender

Norma Duran

In Memory of

Keith Dale Blankenship
Terry Clemmer
Dr. Eileen & Jim Piwetz
Janie & Ken Riley
Nanette & Dennis Sever
Dale Westfall

In Memory of Ira C. Bostic

Terry Clemmer
Dale Westfall

In Memory of

Claudia A. Matthews
Midland College Family

In Memory of Dale Clemmer

Katherine Allen
Rebecca Bell
Sylvia Cevallos
Maricela A. Dominguez
Dr. Pamela Howell
Adriana Jaso
Mary Lopez
Ami & Mike Makowsky
Chris & Chip McCarver
Cynthia & Art Morales
Dr. Eileen & Jim Piwetz
Andrew & Jan Reed
Janie & Dale Riggs
Ema Rivera
Dr. Deana Savage
Vicki & Dr. Steve Thomas

In Memory of

Helen & Dale Clemmer
Helen & Bob Peetz

In Memory of Bonnie Edwards

Lisa & Matt Worden

In Memory of Todd Edwards

J. Don Wallace
Lisa & Matt Worden

In Memory of Bill Howell

Dr. Andrea Zabel

In Memory of Jake

Dr. Eileen & Jim Piwetz

In Memory of A.A. (Arvid Arthur)

"Poosty" Jones
Gretchen & Frank Bell
Rebecca Bell
Pam & Bob Leibrock
Dr. Eileen & Jim Piwetz
Glenda & Eddie Upchurch

In Memory of Jean Knight

Dr. Pamela Howell
Mary Lopez
Chris & Chip McCarver
Dr. Eileen & Jim Piwetz
Ema Rivera
J. Don Wallace

In Memory of Owen "Bud" Marcy

Rebecca Bell
Dr. Pamela Howell
Cynthia & Art Morales
Dr. Eileen & Jim Piwetz

In Memory of

Plutarco Padilla Muñoz
Maricela A. Dominguez
Norma Duran
Dr. Pamela Howell
Emma & Percy King
Cynthia & Art Morales
Dr. Eileen & Jim Piwetz
J. Don Wallace
Dale Westfall
Joan Williams

In Memory of Myrtle Wilson

Norma Duran
Dr. Pamela Howell

Health Sciences

Simulation Center

Linda & Stanley Fox
The Insurance Man & Associates
Dan M. Leonard
I.A. O'Shaughnessy Foundation
Sandra & Dr. Rex Peebles

Continued on page 11

Chaparral Center Renovation Update

The Chaparral Center Renovation fund has been put to good use updating this beloved community facility with an elevator, new restrooms, a green room and locker rooms. The elevator was completed last October and the new restrooms, green room and locker rooms are in progress. There are now men's and women's restrooms at EVERY entrance to Chap Center, and two new "family" restrooms—unisex facilities designed for families who need disability access and baby-changing stations—have been added at entrances one and two. The family restroom at entrance two is complete, while Chap Center Director Mike Stevens estimates that the second will be complete in mid-October.



The new bathrooms at
Chaparral Center

The green room and locker rooms are in progress and should be completed in late September. Each locker room will have three toilets and two private showers. All of the above new facilities will all be ADA compliant.

Midland College Foundation Donors

May 14 - August 25, 2009

Continued from page 10

In Memory of:

Owen "Bud" Marcy
A.A. (Arvid Arthur) "Poosty"
Jones
Dr. Charles Simmons
Dr. Deana Savage

*Davidson Distinguished
Lecture Series*

Basic Energy Services

Friends of the Series 2009

June Cowden
Charlyne Dodge
Marilyn Friday
Jenifer & Patrick Holeva

*Midland College
Foundation, Inc.*

H.L. Brown Operating, L.L.C.
William S. Marshall
Kennedy Minerals LTD

*Programs***Professional Pilot Program**

In Memory of A.A. (Arvid Arthur)
"Poosty" Jones
MC Cosmetology
Department

Students In Philanthropy Program

Abell-Hanger Foundation

*Scholarships***Arroyo Designs****BAT Scholarship**

Nancy & Dennis McIntosh

Dr. Gregory Bartha Health Sciences Scholarship

In Honor of Dr. Gregory Bartha
Dixie C. Mims
Patricia La Force

Dr. Marshall Box Endowed Scholarship Fund

In Memory of James I. Trott
Lucy Box

Dara Perry Bush RN B.S.N. Nursing Scholarship

In Honor of Jackie Perry
Sandy & Roger Stephenson

In Honor of Wes Perry
Mary Beth Corbett

In Honor of:

Bill Watson
Dee Watson
Jackie & Wes Perry

In Memory of:

Buddy Branum
Leta Mae (Lee) Denny
Robert Hannifin
Becky Huff
Shirlee Rodgers
Lorin Rulla
Joe Vaughn
Gary Dale Wood, Jr.
Jackie & Wes Perry

Cece Brune Scholarship

Cece & A.J. Brune

Doctor's Day 2009

In Honor of:

Paul Best, M.D.,
Daniel Nelson, M.D.
Kathy Reeves

Dragisic Memorial Scholarship

In Memory of:

Tommy Casbeer
David Hernandez
Margaret J. Schott
Sandra & Arthur Dragisic

Energy Technology Scholarship

Permian Basin Geophysical
Society

General Nursing Scholarship

In Memory of Don Cannon
Ann Ashby Gett
Linda & Elmer Johnson
Anne & Jim McLaughlin
Linda & Odell Smith
Rebecca Watson

Maxine & Robert Hannifin Scholarship

In Memory of Robert Hannifin
Nancy & Barry Beal
Suzanne & Robert Benson
Julia & Bob Desmond
Nancy Jordan
Gordon Marcum II
Midland County Reserve
Deputies
Linda & Curtis Neeley
Darlene Rittenhouse and
Family
Lou & John Scherer

David Hoy Harrison Music Scholarship

Estate of Helen G. Harrison

Marie Hinkle Scholarship

Twentieth Century Study Club

KIDS' COLLEGE**Scholarship**

James A. "Buddy" Davidson
Charitable Foundation

Clayton McKinney Law Enforcement Scholarship

Anonymous

Ray Myers Radiological Technologist Scholarship

Permian Basin Society of
Radiologic Technologists

Midland County Medical Society Scholarship

In Memory of Joseph Suckarieh,
M.D.

Physician Members of the
Medical Society

Midland's Legacy Scholarship

Abell-Hanger Foundation

Petroleum Accountants Society of the Permian Basin Scholarship

Petroleum Accountants Society of
the Permian Basin

Scholars' Dollars-2009

Abell-Hanger Foundation
Martin O. Adams
Angel's Dance Club
The Bart Scharlach Memorial
Foundation
Dale W. Beikirch
Big Bend Communications, Inc.
Chamber of Commerce Women's
Division
Jay Chancellor Office Supply
Cooks Catering Company
Fass Fuel Systems
First Choice Power
Fort Stockton Enterprises, LLC.
Fort Stockton Home Furnishings
Fort Stockton Lions Club
Fort Stockton Rotary Club
Genesis Wire Company, Inc.
Guaranty Bond Bank
Mr. & Mrs. Abel Gutierrez
Hampton Inn
Dorthea Huelster
E.H. Huelster
Arlouine Humphrey

Landgraf, Crutcher & Associates,
Inc.

Mi Casita
Napa Auto Parts
Nolen Pharmacy
Glenda & Paul Pasqua, Jr.
Dr. Hulon H. Pass
Pecos County Feed & Supply, Inc.
Pecos County State Bank
Remie's Body Shop, Inc.
Sharon A. Roosevelt
Sandridge Operating Co.
Sawyer & Associates
Spring Branch Water Well
Service
Ann Stapp
P. and N. Thammasithiboon,
M.D., P.A.
Albert G. Valadez
Maricela & Antonio Villareal
Wal-Mart Foundation
Neill Woodward

In Memory of Frazier Riggs
Apache Instrumentation &
General Construction

Special Scholarship

Caryl & Art Custer
Jenifer & Patrick Holeva
Jack C. Hunnicutt Trust
Harley R. Stimmel
Eleanor Terrell
Yucca Garden Club

In Memory of Dr. Neil Luebke
Leola Beckstrom

Howell Watkins & Betty Gaines Behavioral Science Scholarship

H.A. Watkins

Franz Weis Automotive Scholarship

Permian Basin Auto Club

*Athletic Programs***Athletic Department**

Abbott Development Company
David G. Griffin

Golf Program

Bennie & Robert Bledsoe
Plains Marketing, L.P.
Professional Golfers Association
of America (PGA)

Softball Program

Midland United Girls Softball
Association

Midland College Employees' Payroll Deductions

Numerous members of the Midland College Family have demonstrated their support of the College's programs through monthly payroll deductions for the past fifteen years. The following employees used this method over the last academic year (September 2008-August 2009).

Athletic Endowment Fund

Dr. Terry Gilmour
Dennis Sever

James Bradford Political Science Memorial Scholarship

Dr. Terry Gilmour

Buckner-Hearthstone KIDS' COLLEGE

Dr. Nancy Hart
Dennis Sever

Chaparral Circle Endowment Fund/Court of Honor

Evelyn Barron
Rick Bender
Maricela Dominguez
Norma Duran
Kay Floyd
Alma Guyse
Karen Harris
Dr. Nancy Hart

Dr. Stan Jacobs
Dr. Richard Jolly
Dr. Diego Jones
Carlota Kellogg
Mary Lopez
Chip McCarver
Cynthia Morales
Dr. Will Morris
Bob Peetz
Helen Peetz
Ken Riley
Dr. Andree Rosen
Dennis Sever
Monica Sosa
Mike Stevens
Rita Stotts
Brenda Tipton
David Truitt
J. Don Wallace
Dale Westfall

Chaparral Center Renovation

Ema Rivera

Fox Science Building

Elizabeth Brown
Judy Jordan
Dennis Sever
J. Don Wallace

Friends of the Series

Dr. Terry Gilmour
Dr. Deana Savage
Mike Schneider

Health Sciences Simulation Center

Bill Heathman

Frances & Lee Morris ABE General Education Development Scholarship

Dr. Nancy Hart
Dr. Will Morris

Clayton McKinney Law Enforcement Scholarship

Bob Peetz

Corporate Matching Gifts

Corporate matching gifts have enabled businesses to double or triple their employees' and retirees' donations to education and other worthy causes. These gifts are an important source of funding for Midland College. For information on gift opportunities, contact MC Foundation Executive Director,

Eileen Piwetz at

(432) 685-4526

or by email at

epiwetz@midland.edu

Bank of America

Chevron

Shell Oil Company Foundation

State Farm Companies Foundation

Friends of the Series 2009

Merrill Lynch & Co. Foundation, Inc.

Doctor's Day-2009

Friends of the Series 2009

SunTrust Bank Atlanta Foundation

Howell Watkins & Betty Gaines

Behavioral Science Scholarship

MC receives second installment of PGA monies from Chad Campbell

This past April, champion golfer Chad Campbell designated a \$30,000 contribution to MC's Golf program. The first installment of \$15,000 was given to MC in early April, and the second half was awarded on June 29.

The funds were given through the 2008 Ryder Cup Outreach program, which allows Ryder Cup Team members to select colleges of their choice to receive funding from the PGA of America.

Mr. Campbell is a former MC student who played golf under coach Delnor Poss from 1992 to 1994.

Bond Construction Update

Scharbauer Student Center Expansion and Remodel:

The interior remodel on this project is proceeding as scheduled. The interior wallboard is installed and the ceiling tile is being installed. Student Services staff have been relocated to the Allison Fine Arts Building.

Physical Education Building Expansion: The decorative exterior wall block is being laid and the interior remodel is in progress. This expansion will provide an additional gymnasium and a fitness center, including cardio equipment and free weights, and an exercise room with proper acoustics for classes.

Fox II Science Building: The interior is nearing

Thank you, Midland!

completion. Remodeling of the Chemistry Lab and Distance Learning classrooms is underway, and they should be ready for Spring 2010 semester classes. Offices, upstairs classrooms and biology labs are ready for Fall 2009 semester use. Landscaping is in progress.

Water Well Field & Reservoir: A meeting was held with City Management and the Utilities Department to discuss water sourcing for the college. Proposals considered include a re-use source, a water well field in Midland Draw and domestic water. City Management and City Utilities are committed to assisting MC in lowering water costs.